

Recommended Price Guide
& Technical Specification JUNE 2008



Quality & style for your home

Goodwood Bathrooms

Notes on the price list

All sizes are in millimetres.

All prices are subject to vat at current rate.

Default design and cabinet fittings. Unless clearly specified in writing with order, City and Traditional ranges will be supplied with raised and fielded doors. Arun and Ocean will be supplied with shaker doors. Urban has no doors. City and Traditional are supplied with chrome fittings with standard handles. Arun and Ocean are supplied with smaller slim-line handles and hinge where as Urban has its own dedicated fittings.

It is possible to specify alternate door and draw design or handle option at the point of order on Arun, City, Traditional and Ocean. On some Traditional and Ocean non “made to measure” products this may incur an additional cost, please call our sales team for more information. City has classic reed trim fitted to the stile (upright part of the frame) as standard. Arun has the rounded reed as standard. Ocean special has the single groove reed. Traditional has no reed where as only the Bosham draw unit from the Urban range has the plain reed as standard. All can be mixed with an alternative trim as long as clearly marked with order. Mixing door and handle design is a no-cost option on everything else.

Construction. All doors, draws, frames and all trims are made from solid timber. A real wood veneer is used on internal shelves, backs and carcass sides. All other products are solid wood.

Fitting. All Goodwood furniture is designed for fitting by experienced fitters and consequently no instructions are provided. Toilet seats have installation and care notes printed on the box.

Fixings. All 5 ranges of furniture are supplied with relevant fixings. Toilet seats have their own fittings packed separately. Due to the infinite number of fitting methods we do not supply any fittings or fitting instructions with bath panels. Door handles are supplied loose for positioning on site.

Combining ranges. Non “made to measure” Ocean and Traditional models are designed for free standing only. They can be made to touch side walls or fit wall to wall by means of “made to measure”. It is possible to mix ranges by means of “made to measure”, please contact our sales team to discuss.

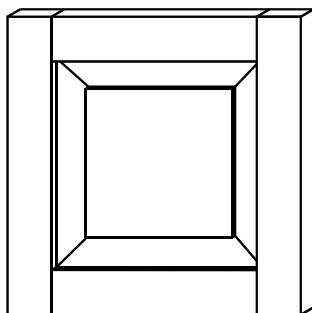
Finishes. There is a wide range of standard finishes covering 6 different timber species in 16 different colours. We also are able to supply furniture primed ready for painting and supply “in the white” being raw wood for finishing on site. The samples on page 9 of the colour brochure and website are photographs only. Make sure your choice of colour is based on one of the larger photographs in the brochure or a sample from your local showroom. Please see our sample service. We will send up to three samples F.O.C. In addition we offer a colour matching service for a small surcharge.

We offer stone worktops in 3 solid marble and 8 solid granite colours shown on page 8 of the colour brochure. We regret that due to weight we are only able to post one stone sample.

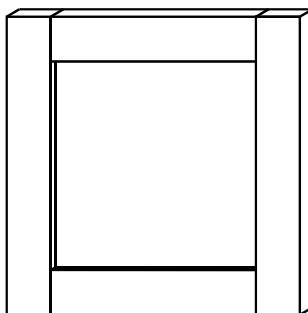
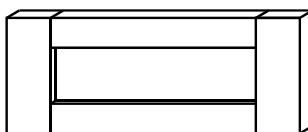
When selecting wood and stone finishes do consider that they are all a natural product and exact reproduction of the samples and photographs are impossible due to natural variation of the material.

CONTENTS

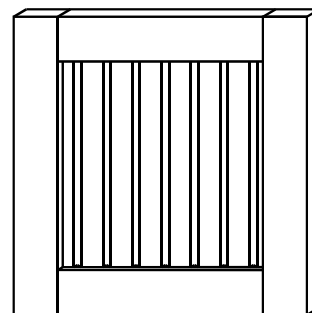
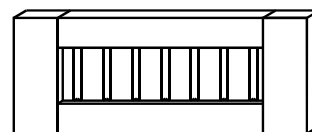
	PAGE NO.
BASIN MATRIX	4 & 5
HOW TO ORDER	6
URBAN	7
ARUN	8 & 9
OCEAN	10 to 13
CITY	14 to 19
TRADITIONAL	20 & 21
GRANITE AND MARBLE	22 & 23
WOODEN WORKTOPS	24
MIRRORS, LIGHT PELMETS AND BRIDGES	24 to 26
DEMISTER PADS	26
BATH PANELS	27 & 28
SANITARYWARE	29 & 30
TAPS AND MIXERS	31
TOILET SEATS	32 & 33
LEVERS AND PULLS	34
SPARES AND MISCELLANEOUS	34
MOULDINGS	34
BEDROOM FURNITURE	35 & 36
FRAMES AND DOORS	37
FLUTED SECTIONS/ARCHITRAVES	37
LIBRARY/LIVINGG ROOM	38











Raised and fielded panel door and drawer style. The doors can also have bevelled glass in clear or mirrored.



Shaker and Ocean door and drawer style. The doors can also have plain glass in clear, mirrored and smoked



Tongue and groove door and drawer style.

		Minimum worktop depth when using with splashback	Arun	Urban	Ocean	City	Traditional
	Standard Underpin basin 560w x 440mm (overall size)	570mm	*		*	*	*
	Medium Underpin basin 510w x 440mm (overall size)	570mm	*		*	*	*
	Small Underpin basin 460w x 370mm (overall size)	450mm (410 with tap on side)	*		*	*	*
	Square Underpin basin 550w x 375mm (overall size)	540mm	*		*	*	*
	Jellybean Underpin basin 600w x 370mm (overall size)	500mm	*		*	*	*
	Tangmere Sit on basin 600w x 510mm	570mm		*	*		
	Merston Semi-countertop Basin 500 x 500mm	390mm				*	
	Colworth Inset basin 500 x 500mm	570mm	*		*	*	*

HOW TO ORDER

Take note from the basin fit matrix on page 4 & 5 to see what basins are compatible with which ranges. This will determine which range and basin model will be used. It is possible to use a basin from another manufacturer but there is a charge for doing so and we would need to have the basin before starting the order. (templates are not acceptable) If using other sanitaryware you should ensure that all items are compatible for use and will fit the furniture. The selection of basins are featured on page 30, 31 and 32 of the coloured brochure.

Having selected a basin and choice of furniture range from either Ocean, Arun, Urban, City or Traditional you can now consider colour, design and worktop. City and Traditional are normally supplied with a raised and fielded door but can have shaker, glass or tongue and groove as an alternative. Arun and Ocean has a shaker door as standard and can have raised and fielded, glass or tongue and groove as an alternative. Take care with some set size products in Ocean and Traditional as it may incur an additional cost to supply with an alternative door. Door designs can be seen on page 9 of the colour brochure.

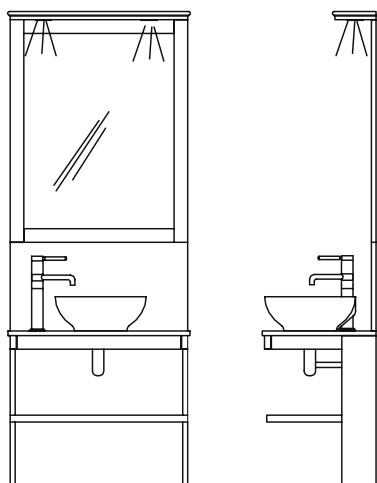
Select your choice of finish from any of the 16 shades from 6 different woods. Choose from the larger photographs in the brochure or try to see the wood in a display setting. If this is not possible we are happy to post you up to 3 wood samples to help you decide. See page 9 of the colour brochure for colour chart.

All ranges have a default trim (or reed) fitted to the style (upright of the furniture frame). Classic reed with City. Rounded reed with Arun and Single groove reed with Ocean made to measure. (Ocean standard has the same design machined direct into the stile). Traditional standard has totally plain style. Only Bosham from the Urban range requires a reed where the plain design is fitted as standard. However all can be mixed and matched as a no cost option but must be clearly marked with order. See page 9 of the colour brochure for the full selection.

Select your choice of stone top from the range of 11 shown on page 8 of the colour brochure. We stock 3 marbles, Carrara bianco, Crema nuovo and Estromoz. Everything else is granite. As a guide granite is much harder and durable than marble but normally darker. Your choice of basin will determine the depth of the top and furniture. We would always recommend using a splashback especially in conjunction with a mirror.

Consider your design and layout. Feel free to send us a simple sketch indicating your plans and we will provide you with a CAD drawing and full quotation. Call our sales team to discuss your requirements if you find that easier. Visit our showroom in Chichester Monday to Friday 8.00am to 5.00pm (other times by appointment) to see a wide selection of our products and talk face to face with our sales team. Call in at one of our displaying dealers. A list of dealers is available from our website www.goodoodbathrooms.co.uk. If you require assistance in measuring we will visit you at home, discuss your requirements, measure using laser instruments and provide a CAD drawing with full quotation. We do however make a charge for this service which is refundable with order.

URBAN RANGE



Plan and elevation of Ashling washstand showing Sutton basin. Also available in Chidham, Emsworth, Tangmere or Walton

Ashling washstand 2090mm high x variable depth x variable width.
Complete with wooden base, mirror, bottle trap and pelmet with 2 chrome low voltage lights, Choice of basin, stone top and splashback.

Up to 1000mm wide £3004

Ocean high rise and mixer tap & waste for Sutton basin £158

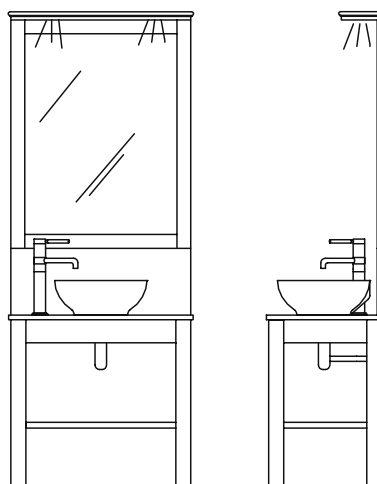
If you require 2 bowls and/or a wider unit please contact the office for quotation.

Aldwick washstand Up to 1000mm wide x variable depth x 2070mm high
Complete with wooden base, mirror, bottle trap and pelmet with 2 chrome low voltage lights, Choice of basin, stone top and splashback.

Up to 1000mm wide £2751

Ocean high rise mixer tap and waste for Sutton basin £158

If you require 2 bowls and/or a wider unit please contact the office for quotation.



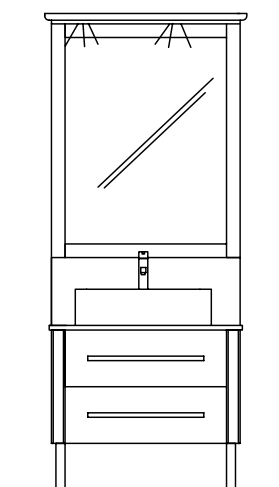
Plan and elevation of Aldwick washstand showing the Sutton basin. Also available in Chidham, Emsworth, Tangmere or Walton.

Bosham washstand 2070mm high x variable depth x variable width
Comes with wooden base with soft close drawer runners, mirror, pelmet with 2 low voltage lights, choice of basin, stone top, and splashback.

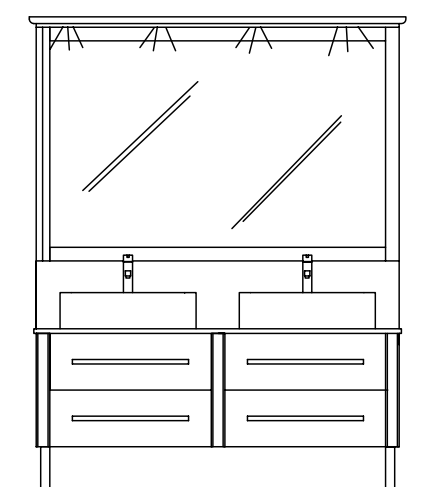
Up to 2000mm wide £5956

Up to 1000mm wide £3120

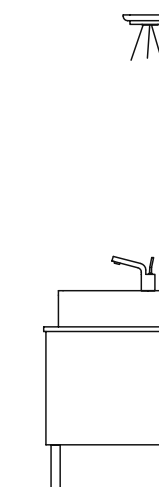
**Choose your basin from either, Sutton:
Emsworth: Chidham: Tangmere: Walton:**



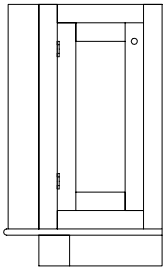
Front elevation of the 2 drawer Bosham unit showing the Tangmere basin. Also available with Chidham, Sutton, Emsworth or Walton.



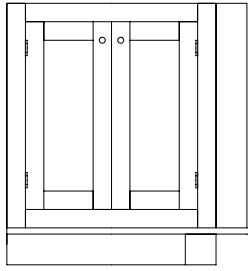
Front elevation of the 4 drawer Bosham unit showing the Tangmere basin. Also available with Chidham, Sutton, Emsworth or Walton



Side elevation of the Bosham unit showing the Tangmere basin.



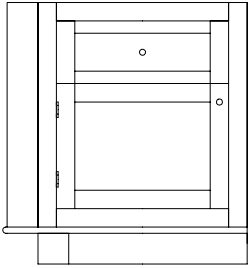
Arun 1 door floor unit with l/h radius end.



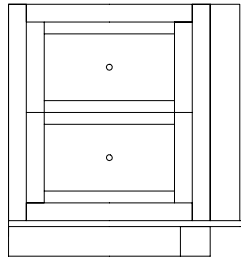
Arun 2 door floor unit with r/h radius end.



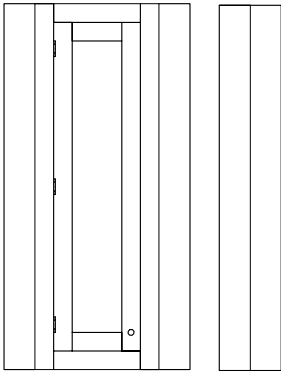
Arun floor unit side elevation.



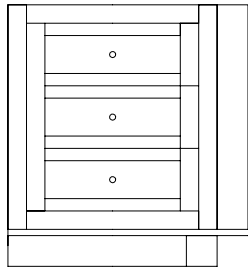
Arun door & floor unit with l/h radius end.



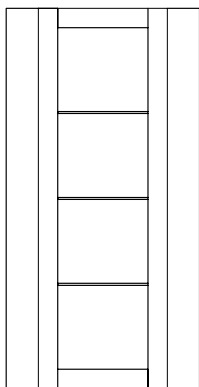
Arun 2 drawer unit with r/h radius end.



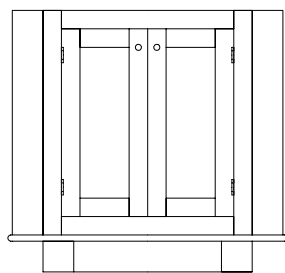
Arun 1 door wall unit front and side Elevations.



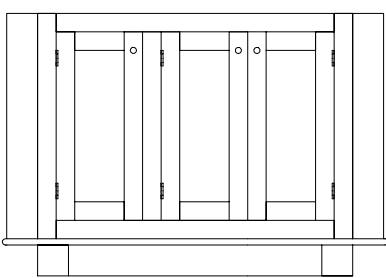
Arun 3 drawer unit with r/h radius end.



Arun open shelf unit with glass shelves



Arun 2 door vanity unit with 2 radius ends



Arun 3 door vanity unit with 2 radiused ends with elevation.

ARUN RANGE

The following pages are a guide towards the individual prices within the Arun range. Each order is made entirely to your own specification and many different components are required to make up a continuous run or arrangement of furniture. We recommend that you provide us with a simple sketch of your planned layout and we will supply you with a full quotation and CAD drawing.

Extra radius end add £268
When required with any of the following

Floor unit

Including plinth 850mm high x 455mm deep x variable width

Up to 600mm wide 1 door £1739
With single radius end.

Up to 1000mm wide 1 or 2 doors £2099
With single radius end.

Up to 600mm wide Open floor unit. £1268
With single radius end.

Door and drawer unit

Including plinth 850mm high x 455mm deep x variable width

Up to 600mm wide. £2057
With single radius end.

Drawer unit

Including plinth 850mm high x 455mm deep x variable width.

Up to 600mm wide 2 drawers £2182
With soft close drawer runners.
With single radius end.

Up to 600mm wide 3 drawers £2360
With soft close drawer runners.
With single radius end.

Tall unit

Including plinth 2050mm high x 455mm deep x variable width.

Up to 600mm wide Tall unit £3029
With double radius ends.

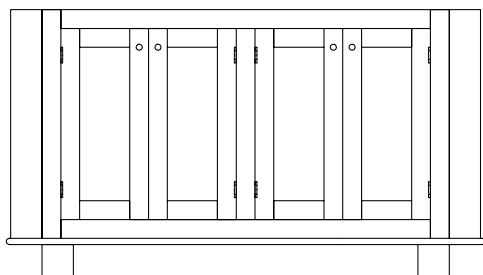
Wall units

1080mm high x 200mm deep x variable width.

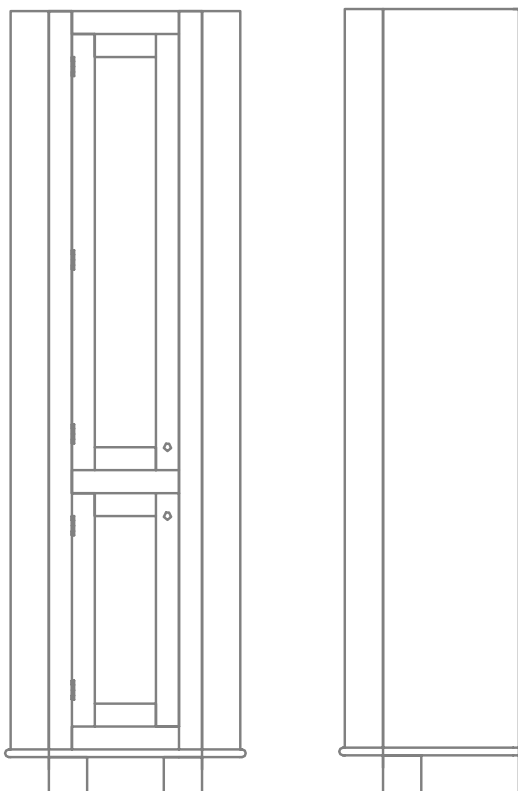
Up to 600mm wide single door wall unit £1705
With double radius end.

Up to 600mm wide open wall unit. £1230
With double radius ends.

Arun continued



Arun 4 door vanity unit with 2 radius.



Arun 2 door Tall unit front and side elevations.

Vanity units

Including plinth 850mm high x 555mm deep x variable width.

Up to 1000mm wide vanity unit
2 doors.
With double carcass ends. £2581

From 1000mm to 1500mm wide vanity unit
3 doors. £3292
With double carcass ends.

From 1500mm to 2000mm wide vanity unit
4 doors. £4280
With double carcass ends.

Light bridges

Including cornice and low voltage lights.
Variable length x 300mm deep x 36mm thick.

Up to 2000mm wide
With 2 low voltage lights. £933

From 2000mm to 2500mm wide
With 3 low voltage lights. £1147

From 2500mm to 3000mm wide
With 4 low voltage lights. £1235

Bath panels

Including plinth variable height x variable width.

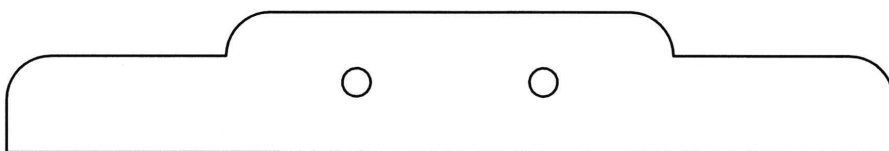
Front bath panel 3 part
With single radius end. £2561

Front bath panel 3 part
With double radius end. £2827

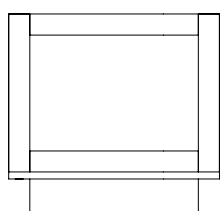
End bath panel 1 part. £669

For Arun mirrors refer to rectangular mirrors on page 26.

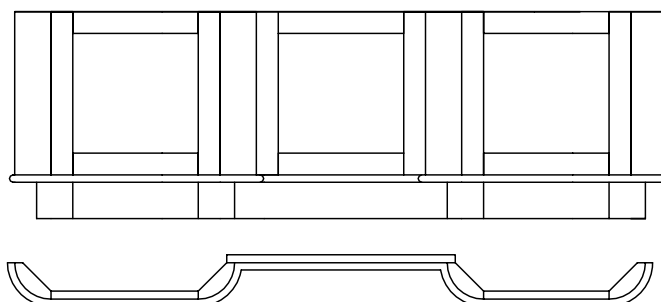
For Arun stone tops refer to pages 22 & 23.



Light bridge showing 2 low voltage lights.

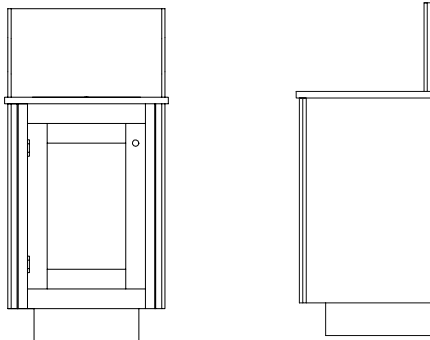


Arun end bath panel.



Arun front bath panel.

OCEAN RANGE STANDARD FURNITURE



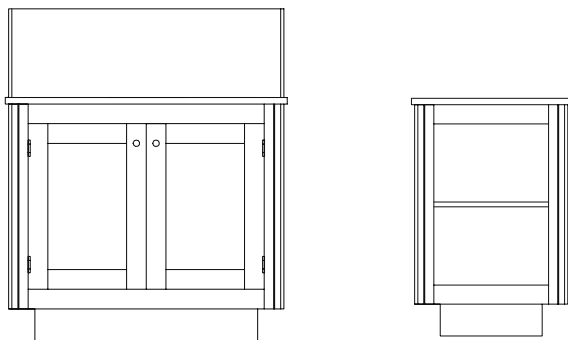
Single door basin unit with stone top and splashback. Suitable for the Emsworth, Chidham and Sutton basins.

Unit for the Chidham, Emsworth or Sutton basin.

410mm deep x 1050mm high overall.

Including, stone top, splashback, and basin. Includes tap hole for use with Sutton basin. Prices for taps on page 31 & 32.

1 door at 480mm wide.	£1236
2 door at 840mm wide.	£1535
Ocean high rise tap & waste	£158



Double door basin unit with stone top, splashback. Suitable for the Emsworth, Chidham and Sutton basins.

Walton basin Unit

410mm deep x 1050mm high overall.

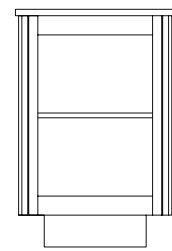
Including basin.

1 door at 480 wide.	£838
---------------------	------

Floor unit 410mm deep x 765mm high overall.

Including stone top.

1 door at 480 wide.	£779
2 door at 840 wide.	£953



with stone Open floor unit top.

Drawer stack 410mm deep x 765mm high overall.

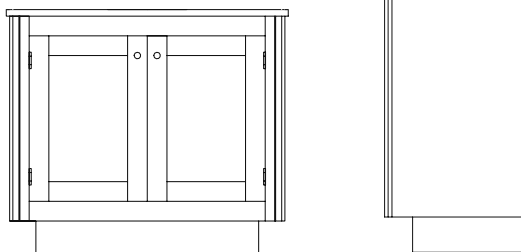
Including stone top and soft close draw runners.

At 480mm wide.	£903
----------------	------

Open floor unit 410mm deep x 765mm high overall.

Including stone top.

At 480mm wide.	£728
----------------	------



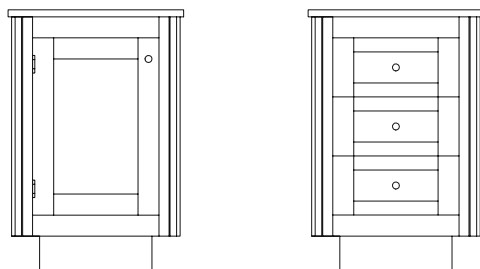
Front and side elevation of Double door floor unit with Stone top.

Nyewood cloakroom unit.

500mm wide x 410mm deep x 1050mm overall.

Including stone top, splashback and underpin basin. Single tap hole to left

At 480mm wide.	£1399
----------------	-------



Single door floor unit. with stone top.

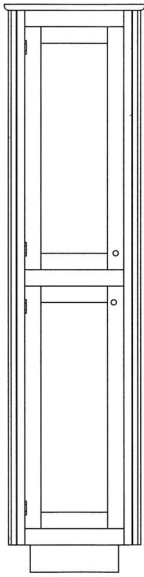
Drawer stack with stone top.

Tall unit 440mm deep x 2072mm high overall.

Supplied with 4 adjustable shelves.

At 480mm wide.	£977
----------------	------

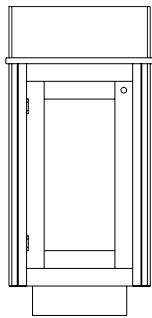
Standard Ocean continued



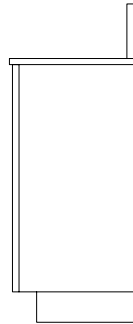
Tall unit.



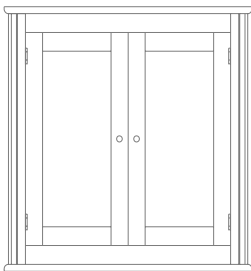
Side elevation
Of Tall unit.



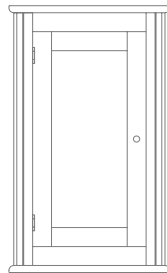
Nyewood cloakroom
unit



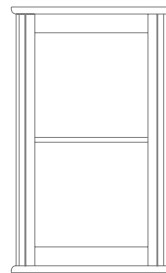
Nyewood cloakroom
unit side elevation



Double door wall unit.



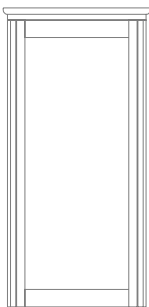
Single door wall unit.



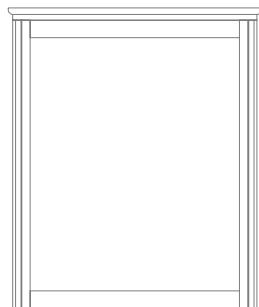
Open wall
unit.



Side elevation
Of all wall units.



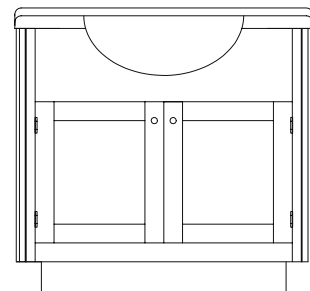
Mirror to suit 1
door unit.



Mirror to suit 2 door unit



Side elevation
Of all mirrors.



Donnington basin unit with basins
available in 4 different widths.

Wall units 175mm deep x 844mm high.
Units can be supplied with mirrored or plain glass doors as a no cost option.

1 door at 480mm wide. £501
2 door at 840mm wide. £677

1 low voltage light set £64
for use with glass doors.

Open wall unit 175mm deep x 844mm high.

At 480 wide. £332

Mirrors including pelmet, cornice and 2 low voltage lights. 175mm deep x 1030mm high.

At 480mm wide. £660
At 840mm wide. £794

Ocean Donnington basin unit.

365mm deep x 915mm high.

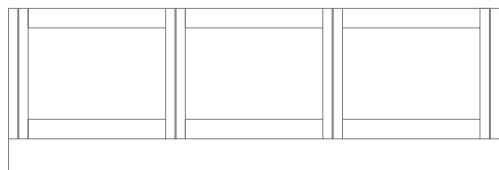
Including basin.

2 door at 750mm wide. £795
2 door at 850mm wide. £869
2 door at 950mm wide. £969
2 door at 1050mm wide. £1092

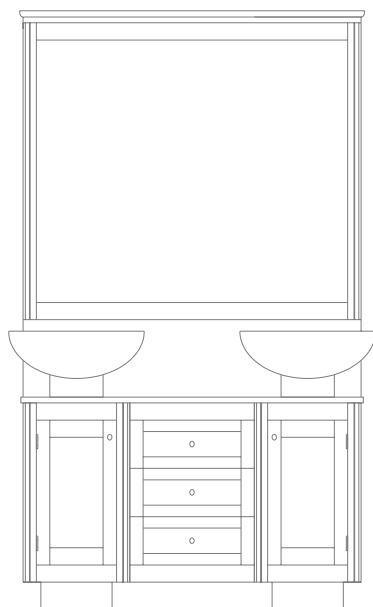
OCEAN RANGE SPECIAL SERVICES.

If you want an individual unit to suit the proportions of your bathroom we offer a bespoke service. If you prefer a fitted look we produce (using the unique fixing technique developed with our City range) units that can fit between the wall and a bath or 2 walls. We can turn corners. We can even produce units that surround all 4 walls. As long as you accept the basic design of the units the only limiting factor is the imagination. Please note drawings down the side of this page illustrating some of the possibilities open to yourselves.

Ocean bathpanels are the same price as the special bathpanels and can be found on page 27 & 28.



Ocean bathpanel available in any height and width, see pages 21 to 22 for prices.



A typical stand alone unit made up of 3 special units with stone top, splashback and mirror. Photograph in



Showing special configuration of units between wall and bath.

Basin unit/Floor unit.

Up to 600mm 1 door	£698
601mm to 1000mm 2 door	£822

Open floor unit

Up to 600mm	£593
From 601mm to 1000mm	£648

Drawer stack Including soft close draw runners

Up to 600mm	£989
From 601mm to 1000mm	£1190

Wall unit

Can be supplied with mirrored or plain glass doors at no extra charge.

Up to 600mm 1 door	£602
601mm to 1000mm 2 door	£744

Open wall unit

Up to 600mm	£391
From 601 to 1000mm	£449

Tall unit

Up to 600 2 door	£1116
From 601 to 1000mm 4 door	£1564

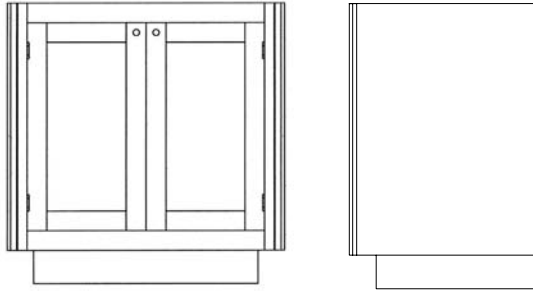
Infills

Used to hide unsightly pipes and to rectify out of square walls.

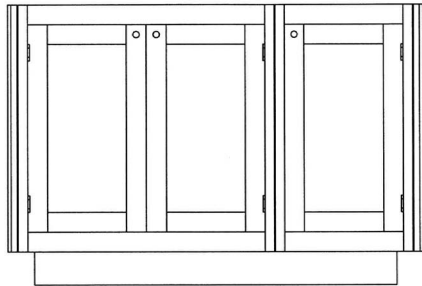
Infill for floor/wall unit	
Up to 200mm	£78
Up to 400mm	£102
Infill for tall unit	
Up to 200mm	£162
Up to 400mm	£274

WE WILL HELP

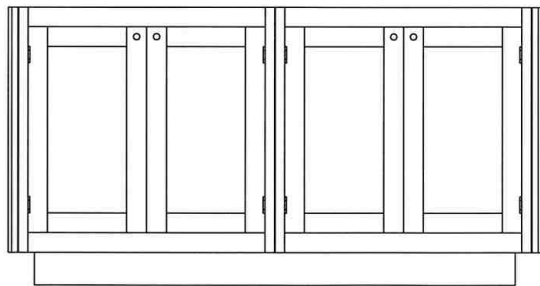
If you have any trouble at all send us a rough sketch of your requirements and we will send you a quotation within two working days. We will even send you a drawing if required. If however you require a site survey with bathroom planning, this can be arranged for £100 + V.A.T. which will be refunded upon order.



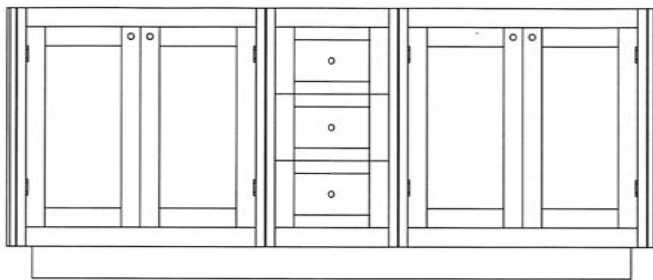
Ocean full depth vanity unit 2 door front and end elevation.



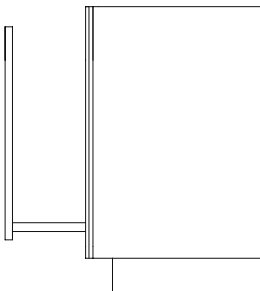
Ocean full depth vanity unit 3 door.



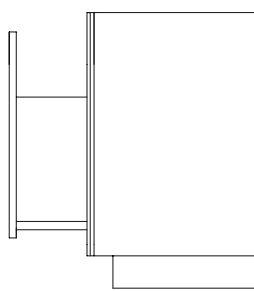
Ocean full depth vanity unit 4 door.



Ocean full depth vanity unit 5 door with integral drawer stack in lieu of door.



Ocean full depth vanity showing pull out base for your bin to fit on.



Ocean full depth vanity Showing pull out laundry

Ocean full depth vanity units up to 700mm deep.

For use with underpin basins and larger sit on basins
Variable height x variable width.

1 door.

Up to 500mm.
From 501 to 700mm.

£814
£872

2 door.

From 640 to 900mm.
From 901 to 1100mm.

£1023
£1085

3 door.

From 1000 to 1150mm.
From 1151 to 1300mm.
From 1301 to 1500mm.

£1405
£1472
£1504

4 door.

From 1400 to 1600mm.
From 1601 to 1800mm.
From 1801 to 2000mm.

£1887
£1950
£2015

5 door.

From 1900 to 2100mm.
From 2101 to 2300mm.

£2621
£2687

6 door.

From 2301 to 2500mm.
From 2501 to 2700mm.

£3221
£3295

Integral drawer stack in lieu of a door. £390

Including soft close draw runners

Pull out base ready for your bin per unit. £86

Pull out laundry box on draw runners per unit. £320

All draws are fitted with soft close runners.

Note the laundry box is constructed from veneered M.D.F.

For special ocean mirrors & pelmets see page 25, rectangular, group B.

For special ocean stone see pages 22 and 23.

CITY RANGE

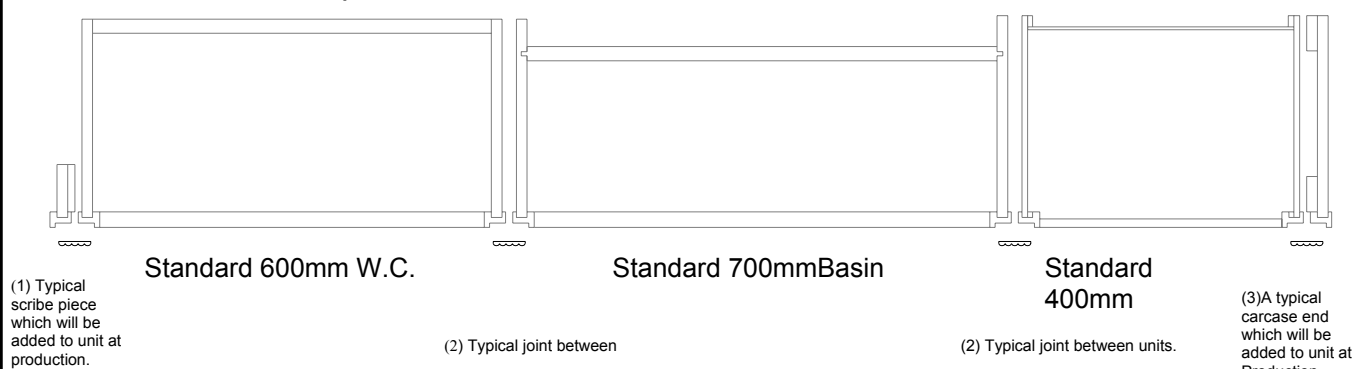
The Goodwood City range is a system of independently constructed units built in a traditional manner. With the addition of custom made sizes and features such as continuous skirting and invisible joints, the end result is that of a fully fitted bathroom. The secret behind this is the unique method of concealing the joints between units with a self locating moulding. This is applied after assembly and prior to fixing skirting. (see K opposite) All units have 150mm internal base void for soil pipe and all other services. Semi counter top basin units also have a 60mm service gap behind the back panel.

Because of the flexible nature of Goodwood City furniture it can seem quite daunting to work out accurate prices or place orders. The notes below are meant to simplify this.

(1) Measure the space you require units for.

(2) Allow 30mm for the two finishing pieces (1 and 3 on the diagram below) Order infills for floor units against walls and carcass ends if in an open location. Below is the plan of the installation opposite showing the configuration of the columns and finishing pieces. You can order wider infills for hiding soil pipes etc. We will add carcass ends to your units during production unless otherwise instructed. Infills will be dry fitted for easy removal during the scribing (fitting to wall) process.

(3) Divide the space left into the units you require. It is worth noting that the only units that can be less than 320mm (no ends) wide are open units and drawer stacks. If you require the Dal front access cistern you will need to order a front access W.C. unit min. width 600mm plus ends.



(4) Next comes the top (L) which can either be granite, marble or wood. You must allow 15mm for any exposed ends for bullnosing. Decide what cistern access is required. If not using a Goodwood cistern make sure that yours will fit. If you have not chosen a Goodwood basin make sure that it is available or delays could occur.

(5) For the wall units the same principle applies to the finishing pieces. Don't worry about lining the units up with the base units as we will do this at point of ordering.

(6) Mirrors, (F) arches/bridges (G) and lights (H) should be added at this point.

(7) Now to tie the whole thing together you need to order the skirting (J) cornice (I) and light baffle (M). The reeds (K) are a free of charge item and will be added automatically.

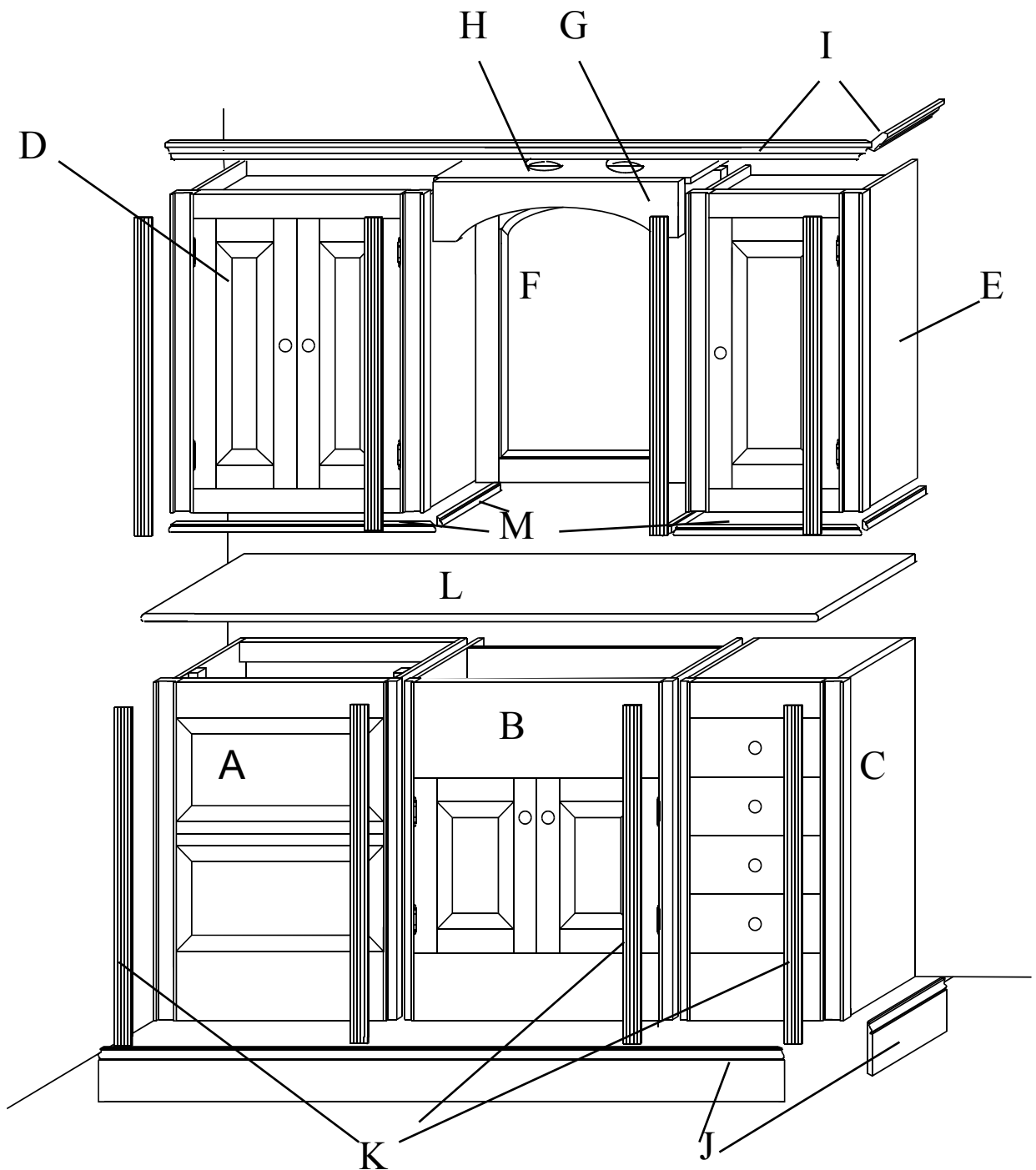
WE WILL HELP

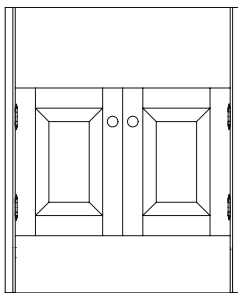
If you have any trouble at all send us a rough sketch of your requirements and we will send you a quotation within two working days. We will even send you a drawing if required. If however you require a site survey with bathroom planning, this can be arranged for £100 + V.A.T. which will be refunded upon order.

An exploded view of a typical City installation.

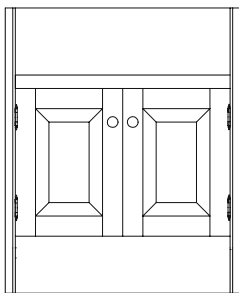
A) FRONT ACCESS WC UNIT
 C) DRAWER STACK
 E) ONE DOOR WALL UNIT
 G) ARCHED LIGHT PELMET
 H) HOLES FOR DOWNLIGHTS
 I) CORNICE
 K) REEDED MOULDINGS
 M) LIGHT BAFFLE

B) BASIN UNIT
 D) TWO DOOR WALL UNIT
 F) ARCHED TOP MIRROR
 J) SKIRTING
 L) WORKTOP

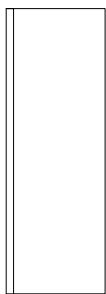




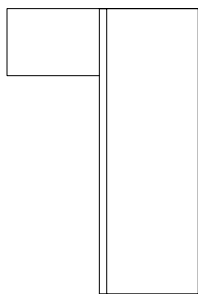
City semi counter top basin



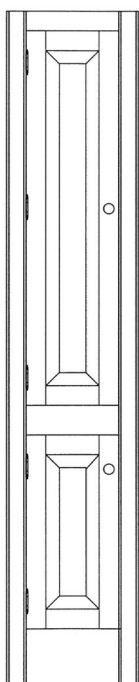
City bow front unit



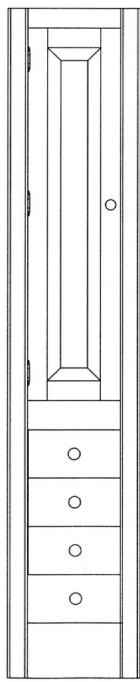
City side elevation of floor units



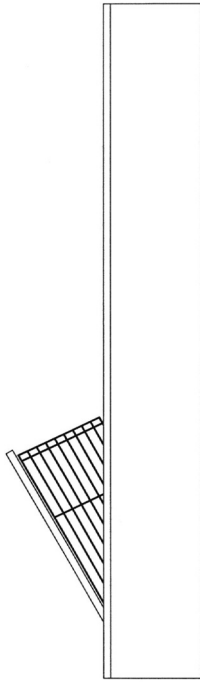
City side elevation of bow front unit



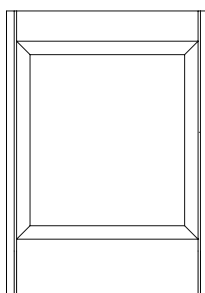
City tall unit



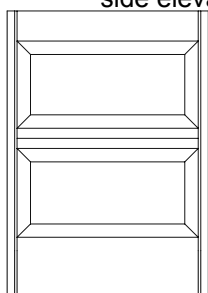
City tall unit with drawer stack.



City tall unit with laundry basket. side elevation



City single panel wc/bidet unit



City front access wc panel

CITY RANGE

Depth of units up to 380mm. (or deeper with a surcharge)

Units can be made in any style.

All units that require them will come complete with standard carcass ends or infills as required.

Semi counter-top basin units.

Top rail made extra deep to accommodate semi counter-top basin.

1 door up to 600mm. £606
2 door from 601 to 1000mm. £688

Bow fronted basin unit.

Made to accommodate marble/granite top fitted with Goodwood underpin basin. 700 width does not include carcass end or infill.

700mm wide only. £654

Tall unit.

Supplied with 5 adjustable shelves.

2 door up to 600mm. £974
4 door from 601mm to 1000mm. £1953

Tall unit with drawers.

Supplied with 3 adjustable shelves and 4 soft close drawers.

1 door/4 draws up to 600mm. £1249

Tall unit with laundry bin.

Supplied with 3 adjustable shelves and chrome laundry bin.

Standard at 400mm. £892

W/C and bidet units (1 panel).

For use with other types of cisterns. Check cistern dimensions and access.

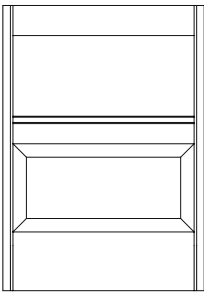
Up to 600mm. £503
From 601 to 1000mm. £548

Front access W/C units (2 panel).

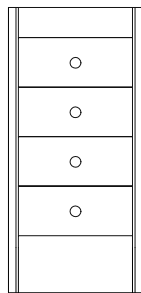
Has removable front panel for ease maintenance and is designed for use with the front access cistern listed below. It is recommended that its at least 600mm wide. See sanitary section for wall hung frames.

Up to 600mm (for use with other cisterns). £581
From 601 to 1000mm. £687
Dual flush front access concealed cistern £117

City range continued



City bidet unit



City drawer unit

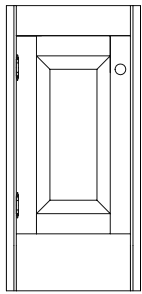
Open bidet units.

Up to 600mm. £606
From 601 to 1000mm. £688

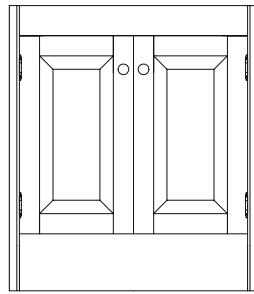
Drawer stacks.

With soft close draw runners

Up to 400mm. £673
From 401 to 600mm. £774



City 1 door floor unit



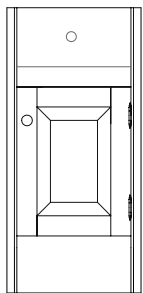
City 2 door floor unit

Floor units.

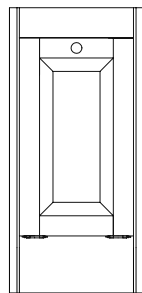
1 door up to 600mm. £580
2 door from 601 to 1000mm. £688

Floor unit with drawer.

1 door/draw up to 600mm. £731
2 door/draw from 601mm to 1000mm. £796



City door & floor unit.



City laundry unit

Laundry unit.

As floor unit but with pull out wood veneered box on soft close draw runners.

up to 600mm.wide £687

Open floor units.

Including 1 fixed shelf.

From 401 up to 600mm. £554
From 601 up to 1000mm. £642

Floor corner shelf unit.

An open angled unit for terminating a run of units.

Up to 400mm. £662

Wall units. 800mm high.

Including 1 fixed shelf.

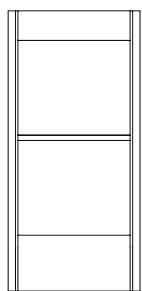
1 door from 401 up to 600mm. £468
2 door from 601 up to 1000mm. £627

Doors can have glass or mirrored doors as same cost option. All glass & mirrors can be plain or beveled.

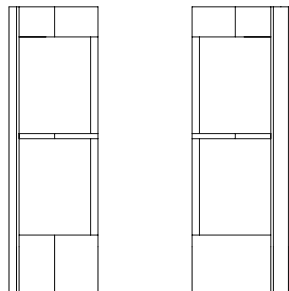
Open wall unit. 800mm high.

Including 1 fixed shelf.

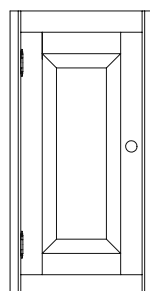
Up to to 600mm. £296
From 601 to 1000mm. £395



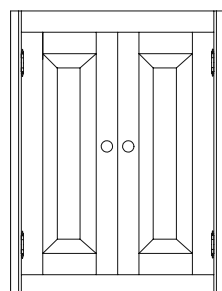
City open floor unit



City front and side elevation of corner floor unit.

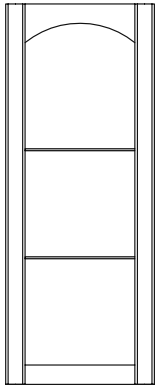


City 1 door wall unit.

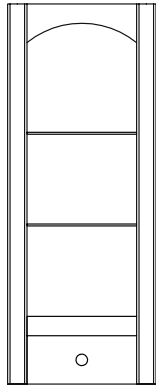


City 2 door wall unit.

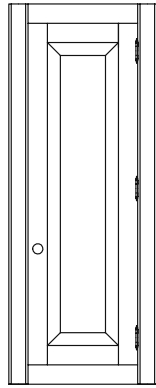
City range continued



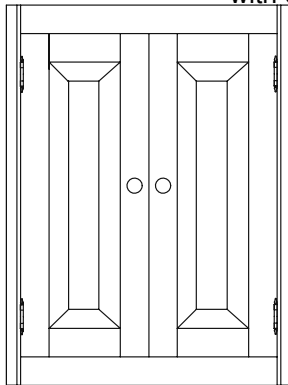
City open tall wall shelf unit



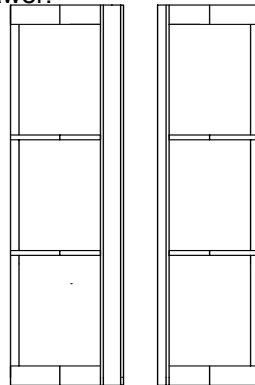
City open tall wall shelf unit with drawer.



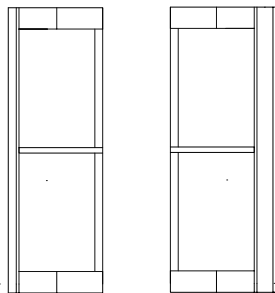
City 1 door tall wall unit.



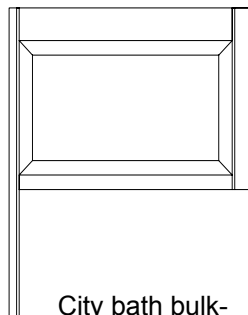
City tall wall 2 door wall unit



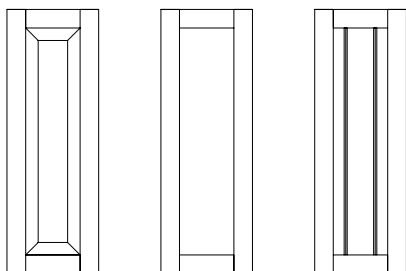
City front & side elevation of tall corner wall unit



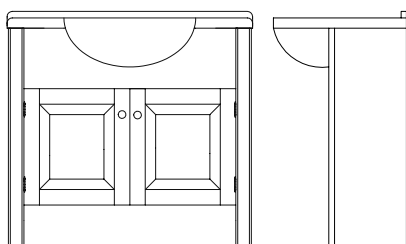
City front & side elevation corner wall unit.



City bath bulk-head unit.



City panelled carcass end all styles



City donnington basin unit with donnington basin

Tall wall units. 1180mm high.

With adjustable shelves.

Open up to 400mm.	£648
Open from 401 to 600mm.	£751
With door up to 400mm.	£838
With door from 401 to 600mm.	£933
With 2 doors from 600 to 1000.	£1209

Doors can have wood, glass or mirrored doors as same cost. Wooden and mirror doors will be supplied with wooden shelves. Glass shelves with open or clear glass doors. Glass and mirrors can be beveled or plain.

Extra for drawer in above tall wall units. £198

Draw is not on runners as too shallow

Extra for down light fitted in above. £66

Corner wall units

An open angled unit for terminating a run of units.

Wall unit up to 400mm. £582

Tall wall unit up to 400mm. £788

Bulkhead unit.

Used for continuing units over baths etc. Please specify height of bath.

Up to 500mm high. £382

X up to 900mm wide.

Panelled carcass end in any style.

Up to 480mm deep £177

City Donnington basin units

Comes complete with basin and must be used as a stand alone unit. Can be 1 or 3 tap hole.

2 door at 750mm wide. £795

2 door at 850mm wide. £869

2 door at 950mm wide. £969

2 door at 1050mm wide. £1092

Infills.

Used to hide pipes etc. Can be rebated to add to and extend units or plain ended. Solid wood.

Infills for base and wall units.

Infill & Carcass end 30mm loose. £36

Up to 200mm £76

From 200mm to 400mm £104

Corner post/infill. £80

Infills for tall units 2050mm high.

Up to 200mm. £165

From 201 to 400mm. £281

Infill for tall wall units to centralise mirrors.

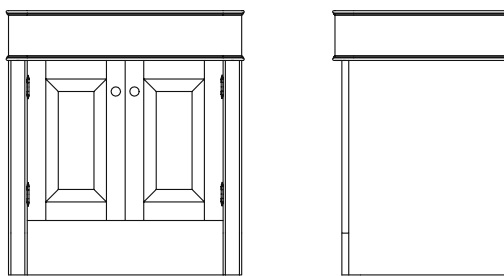
(shown on room set on page 20 of colour brochure)

Tall Wall unit 60mm with return £98

panel in veneered M.D.F.

Veneered board per square metre £137

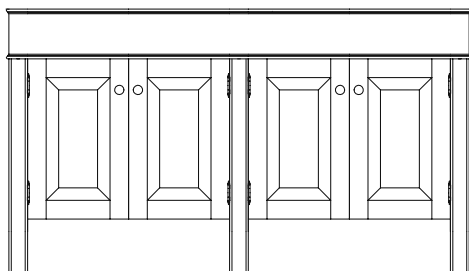
Finished face & 1 edge only.



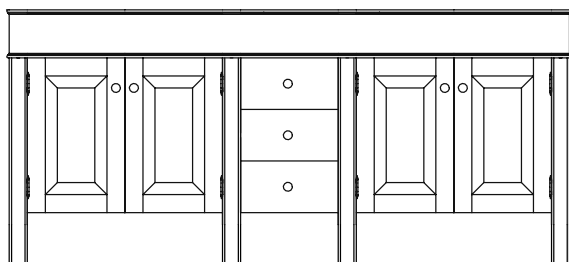
City full depth vanity unit 2 door
Front and end elevation



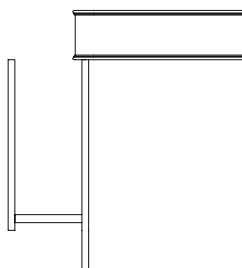
City full depth vanity unit 3 door.
Can be left or right.



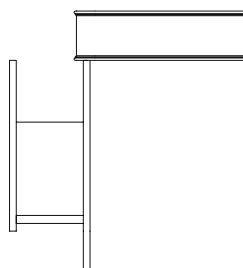
City full depth vanity unit 4 door



City full depth vanity unit 5 door with integral
Drawer stack in lieu of door.



City full depth vanity
showing pull out base
for your bin to fit.



City full depth vanity
showing pull out laundry.



City full depth vanity unit 3
door with integral 2 drawer
stack in lieu of door.

Extras. For all city furniture

Surcharge for fitting door lock.	£62
Surcharge for adjustable shelves. Per unit.	£63
Colour matching service	£136

City full depth vanity units.

From 480 to 700 deep.

Can be ordered with or without reeded inserts.
Skirting if required is extra.

1 or 2 door.

Up to 500mm. (Shaker only)	£831
From 501 to 700mm.	£890
From 701 to 900mm.	£1043
From 901 to 1100mm.	£1107

2 or 3 door.

From 1101 to 1300mm.	£1501
From 1301 to 1500mm.	£1534

4 door.

From 1501 to 1700mm.	£1990
From 1701 to 1900mm.	£2055

5 door.

From 1901 to 2100mm.	£2673
From 2101 to 2300mm.	£2741

6 door.

From 2301 to 2500mm.	£3286
From 2501 to 2700mm.	£3361

Integral drawer stack in lieu of a door.	£390
Pull out base ready for your bin	£90
Pull out laundry box on draw runners	£325

All draws are fitted with soft close runners

Note the laundry box is constructed from veneered M.D.F.

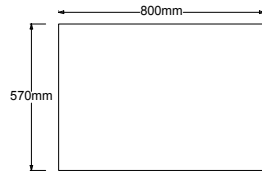
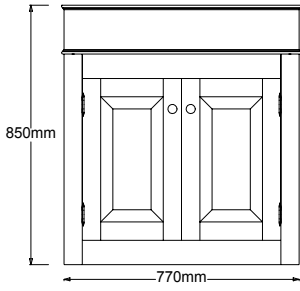
Mouldings for City see page 34

Worktops for City see pages 22 to 24

Mirrors and pelmets for city see pages 24 to 26.

TRADITIONAL RANGE VANITY UNITS AND MIRRORS.

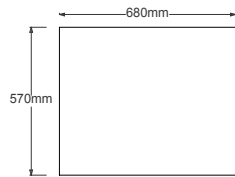
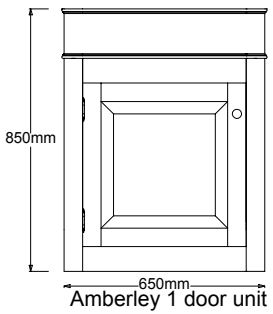
Standard floor units.



Singleton top

- Singleton unit 2 door. £825
- Singleton with wooden top. £1058
- Singleton with marble/granite top and underpin basin fitted. £1677

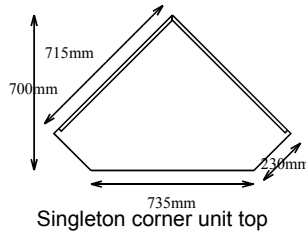
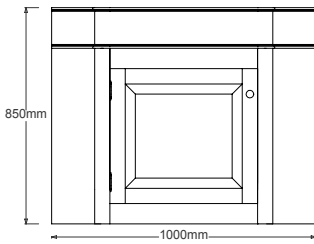
The above marble/granite top is 800mm x 570mm x 20mm and is bullnosed for the Goodwood standard underpin basin which is then fitted. Must state 1 or 3 tap holes. If you require marble/granite splashbacks see page 23.



Amberley top

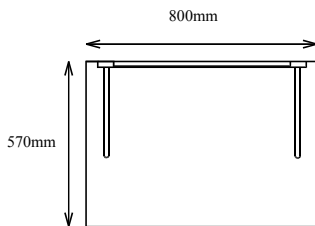
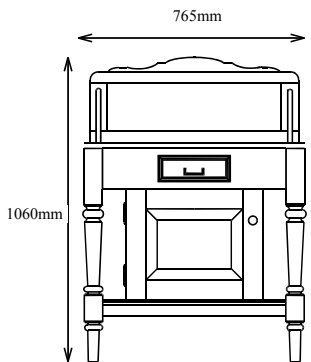
- Amberley unit 1 door. £722
- Amberley unit with wooden top. £956
- Amberley with marble/granite top and underpin basin fitted. £1575

The above marble/granite top is 800mm x 570mm x 20mm and is bullnosed for the Goodwood standard underpin basin which is then fitted. Must state 1 or 3 tap holes. If you require marble/granite splashbacks see page 23.



Singleton corner unit top

- Corner Singleton up to 800 x 800mm. £1084
- Wooden top for above. £297
- Marble/granite top for above & underpin basin £895



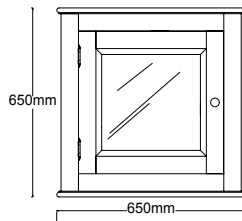
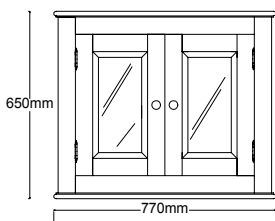
Ascot unit top

- Ascot washstand base unit without top or splashback. £787
- Ascot washstand with wooden top. £1232
- Ascot washstand with marble/granite top and underpin basin fitted. £1640

The above marble/granite top is 800mm x 570mm x 20mm and is bullnosed for the Goodwood standard underpin basin which is then fitted. Must state 1 or 3 tap holes.

Wall units.

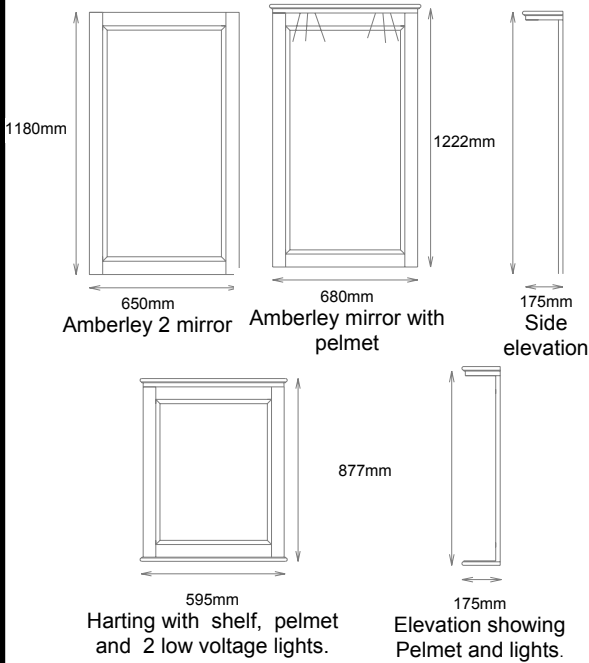
Units can have wooden or bevelled mirrored doors.



Singleton wall unit

Amberley wall unit

- 1 door Amberley wall unit. £360
- 2 door Singleton wall unit. £523

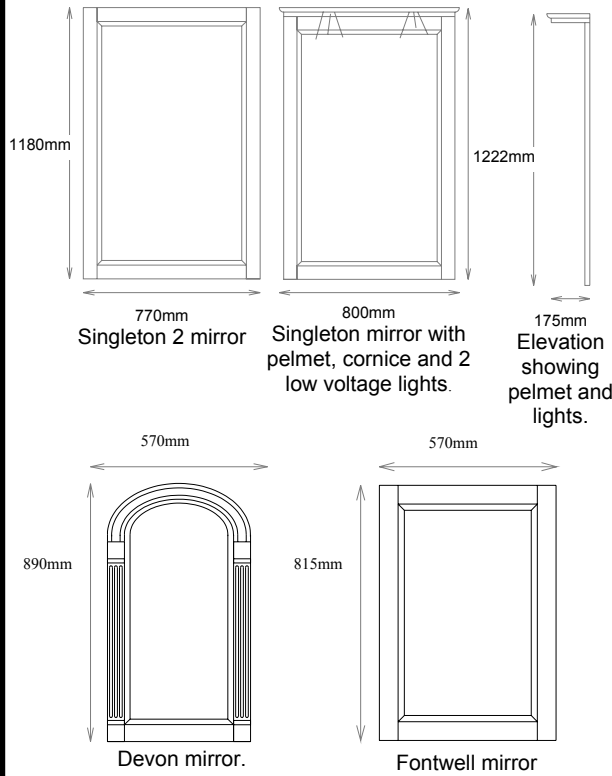


Traditional beveled mirrors.

- Devon. £407
- Fontwell. £236
- Singleton 2. £453
- Singleton. £729
comes complete with pelmet and 2 low voltage lights.
The Singleton and Singleton 2 is suitable for use with the Singleton vanity unit.
- Amberley 2. £397
- Amberley. £645
Comes complete with pelmet and 2 low voltage lights.
The Amberley is suitable for use with the Amberley vanity unit.
- Harting complete with shelf pelmet and 2 low voltage lights. £589

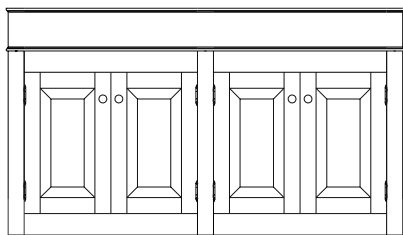
Traditional full depth vanity units.

From 480 to 700 deep.



- 1 or 2 door.**
- Up to 500mm. (Shaker only for 2 door) £831
- From 501 to 700mm. £890
- From 701 to 900mm. £1043
- From 901 to 1100mm. £1107
- 2 or 3 door.**
- From 1101 to 1300mm. £1501
- From 1301 to 1500mm. £1534
- 4 door.**
- From 1501 to 1700mm. £1990
- From 1701 to 1900mm. £2055
- 5 door.**
- From 1901 to 2100mm. £2673
- From 2101 to 2300mm. £2741
- 6 door.**
- From 2301 to 2500mm. £3286
- From 2501 to 2700mm. £3361

- Integral drawer stack in lieu of a door. £395
- Pull out base ready for your bin per unit. £90
- Pull out laundry box on runners per unit. £325
- All draws are fitted with soft close draw runners**
- Note the laundry box is constructed from veneered M.D.F.



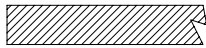
Typical special full depth traditional 4 door vanity unit.

Mouldings see page 34
Worktops see pages 22 to 24
Additional mirrors and pelmets see pages 24 to 26.

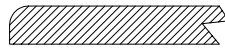
GRANITE AND MARBLE

Our standard marble tops include Estromoz/Rosa Aurora, Carrara and Crema Nuovo. Standard granite tops include Nero Absoluto, Blue Pearl, Giallo Veneziano, Bianco Universale, Tropical black, Kashmir gold, emerald pearl and Verdi Perola. Alternatively if you have any specific requirements for any other, this can be priced on application. All tops are made from carefully selected materials 20mm thick which are sourced from producers in Italy, Spain and Portugal. Although marble and granite have consistent patterns and veining through a block, inevitable variations of colour will occur due to the nature of the material which gives each top its distinctive and unique appearance.

Edge details



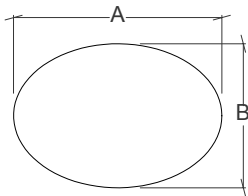
Square edge as in Ocean.



Quarter round.



Full bullnose as in City

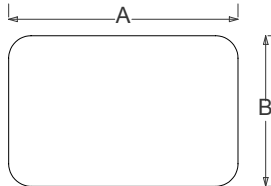


Large underpin A = 460mm
cutout B = 315mm

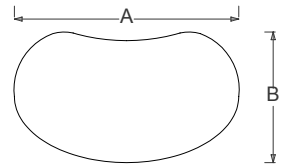
Medium underpin A = 380mm
cutout B = 310

Small underpin A = 360mm
cutout B = 230mm

Underpin basin apertures in stone tops.
The sizes shown are for bullnosed apertures. For square cut apertures add 20mm to A and B

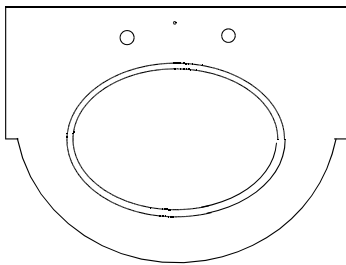


Square underpin A = 460mm
cutout B = 295mm

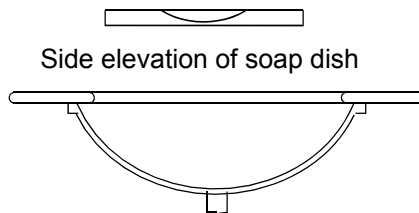


Jelly bean underpin A = 510mm
cutout B = 300mm

Stone details

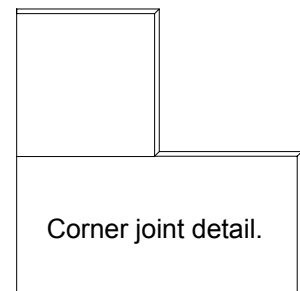


Bow fronted detail
with underpin basin cutout

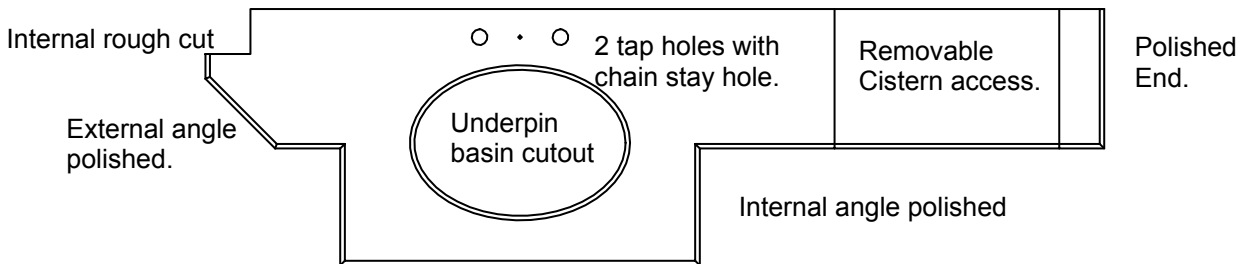


Side elevation of soap dish

Cut through detail of underpin
Basin fixed to stone top.



Corner joint detail.



Break front stone top showing various details

PLEASE NOTE GRANITES AND MARBLES ARE MUCH MORE FRAGILE THAN GLASS UNTIL THEY ARE FITTED CORRECTLY UPON WHICH THEY BECOME THE DURABLE TOUGH SURFACES THAT WE EXPECT AND WILL LAST FOR HUNDREDS OF YEARS.

GRANITE & MARBLE WORKTOP PRICES.

	Up to 315 deep	From 316 to 410	From 410 to 450	From 451 to 570
Up to 200 mm long	£54	£64	£69	£82
201 to 400 mm	£107	£129	£138	£164
401 to 600 mm	£161	£192	£206	£246
601 to 800 mm	£214	£257	£275	£328
801 to 1000 mm	£268	£321	£345	£410
1001 to 1200 mm	£321	£384	£413	£491
1201 to 1400 mm	£375	£459	£483	£573
1401 to 1600 mm	£428	£513	£551	£656
1601 to 1800 mm	£481	£578	£620	£750
1801 to 2000 mm	£535	£642	£701	£843
2001 to 2200 mm	£589	£705	£782	£937
2201 to 2400 mm	£642	£770	£893	£1031
2401 to 2600 mm	£696	£834	£931	£1125
2601 to 2800 mm	£748	£899	£1012	£1219
2801 to 3000 mm	£802	£962	£1093	£1313
Finished ends for tops	£27	£37	£44	£51
120mm radius used in conjunction with Arun furniture				£90

Additional charges

Goodwood underpin basin cut out (all types).	£161
Goodwood underpin basin including fitting (all types).	£247
Internal angle polished/bullnosed.	£109
Shaped worktop (Bow fronts).	£181
Cut out and dry fit Goodwood semi counter top, sit on and inset basin.	£60
Tap holes (35mm diameter).	£14
Chain stay hole (8 mm diameter).	£9
Internal angle rough cut (Soil pipe etc).	£42
External angle polished/bullnosed.	£67
Corner joint detail.	£96
Removable cistern access section (including 4 polished ends).	£130
Soap dish.	£119
Customers semi counter top, sit on and inset basin cut out. (including collection & return of basin).	£197
Customers underpin basin cut out (including collection & return of basin).	£292
Customers underpin basin fitted.	£139

Splashbacks including polished top edge.

	Up to 100 mm high	From 101 to 200mm	From 201 to 300 mm	From 301 to 400 mm
Per linear metre	£84	£168	£254	£315
Polished ends	£10	£18	£27	£36
Roundover ends for Ocean furniture only		£46		

WOODEN TOPS FOR ALL UNITS.

All worktops finish approximately 22 mm thick.

	Up to 315mm	From 316mm to 410mm	From 411 to 450mm	From 451 to 570mm
Up to 500 mm long	£131	£144	£149	£165
From 501mm to 700mm	£158	£188	£199	£233
From 701mm to 900mm	£186	£233	£248	£300
From 901mm to 1100mm	£213	£275	£298	£368
From 1101mm to 1300mm	£240	£320	£348	£436
From 1301 mm to 1500 mm	£268	£364	£399	£503
From 1501mm to 1700 mm	£295	£407	£448	£571
From 1701 mm to 1900mm	£322	£451	£498	£639
From 1901 mm to 2100 mm	£349	£496	£548	£707
From 2101 mm to 2300 mm	£377	£539	£597	£774
From 2301 mm to 2500 mm	£404	£583	£648	£842
From 2501 mm to 2700 mm	£431	£627	£698	£910
From 2701 mm to 2900mm	£471	£672	£747	£977
L shape worktop joint for turning corners		£120		
Dry fit Goodwood basins		£60		
Dry fit your basin (includes collection)		£168		

Light pelmets & bridges

Supplied loose



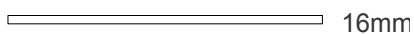
Plan of light bridges and pelmets showing 2 low voltage lights fitted



Front elevation of arched light pelmet



Front elevation of rectangular light pelmet



Front elevation of light bridge

Light pelmets/bridges with low voltage lights.

All lights are dry fitted and available in brass or chrome. Comes complete with transformer and connecting cables ready for connection to a switched lighting circuit.

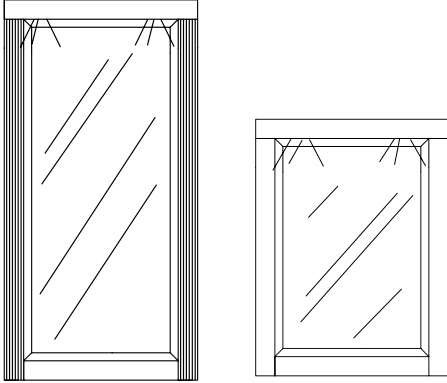
Up to 500mm.	£245
From 501 to 900mm.	£271
The above includes 2 low voltage lights.	
From 901 to 1300mm.	£346
The above includes 3 low voltage lights.	
From 1301 to 1700mm.	£431
From 1701 to 2100mm.	£465
From 2101 to 2500mm	£499
The above includes 4 low voltage lights.	
Extra lights fitted add per light.	£66
Closed end for above. Per end.	£28

Light pelmets and bridges excluding low voltage lights.

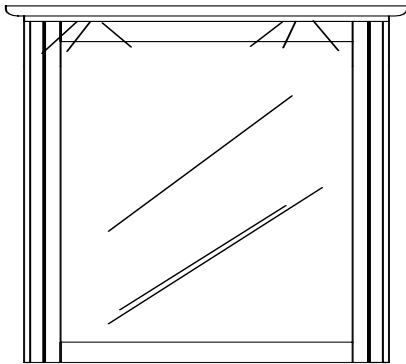
Up to 500mm.	£167
From 501 to 900mm.	£193
From 901 to 1300mm.	£224
From 1301 to 1700mm.	£276
From 1701 to 2100mm.	£311
From 2101 to 2500mm	£345
Closed end for above. Per end.	£28

MADE TO MEASURE MIRRORS WITH PELMETS AND LOW VOLTAGE LIGHTS.

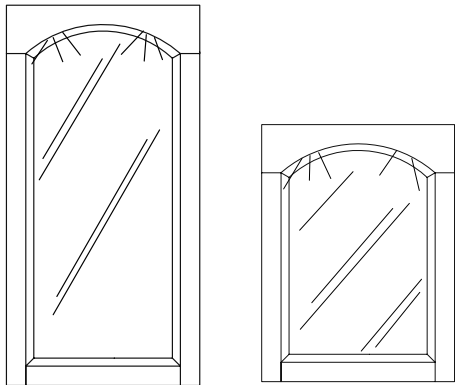
All mirrors are available in any of our styles. With or without inserted mouldings and a choice of beveled or plain glass. All can be fitted with demister pads (see page 26).



1200 & 800h rectangular mirror showing Pelmet and fitted low voltage lights.
1200 mirror fitted with reeded inserts.
Also shows bevelled edge.



1200h ocean style mirror showing light bridge and fitted low voltage lights.



1200 & 800h arched top mirror Showing pelmet and fitted low voltage lights. Also shows bevelled edge.

Group A are up to 800 mm high
Group B are from 801mm to 1200 mm high
Group C are from 1201mm to 1500mm

Rectangular mirrors.

With either light bridge or rectangular pelmet and low voltage lights.

	Group A	Group B	Group C
Up to 500mm.	£524	£636	£747
From 501 to 700mm.	£606	£716	£826
From 701 to 900mm.	£662	£771	£880
The above includes 2 low voltage lights.			
From 901 to 1100mm.	£791	£902	£1011
From 1101 to 1300mm.	£746	£959	£1068
The above includes 3 low voltage lights			
From 1301 to 1500mm.	£987	£1102	£1211
From 1501 to 1700mm.	£1044	£1156	£1265
From 1701 to 1900mm.	£1136	£1245	£1354
From 1901 to 2100mm.	£1190	£1301	£1410
From 2101 to 2300mm.	£1278	£1390	£1499
From 2301 to 2500mm.	£1333	£1445	£1554
The above includes 4 low voltage lights.			
Extra light		£66	
Closed end for pelmets		£28	

Swept top mirrors.

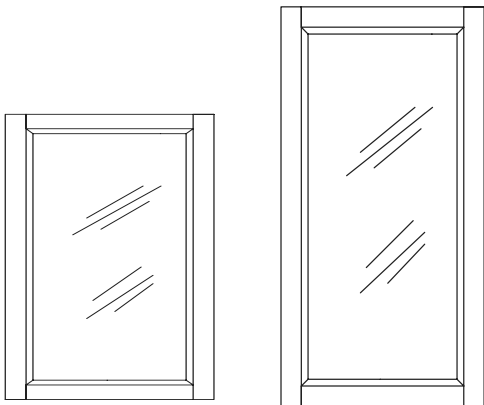
With arched pelmet and low voltage lights.

	Group A	Group B	Group C
Up to 500mm.	£523	£734	£855
From 501 to 700mm.	£733	£853	£974
From 701 to 900mm.	£793	£915	£1059
The above includes 2 low voltage lights.			
From 901 to 1100mm.	£961	£1167	£1202
From 1101 to 1300mm.	£1022	£1143	£1264
The above includes 3 low voltage lights.			
From 1301 to 1500mm.	£1166	£1287	£1409
From 1501 to 1700mm.	£1287	£1410	£1531
From 1701 to 1900mm.	£1382	£1504	£1622
From 1901 to 2100mm.	£1507	£1629	£1750
The above includes 4 low voltage lights.			
Extra light		£66	
Closed ends for pelmets		£28	

Due to the beveling process we cannot manufacture wider swept top mirrors than 2100mm wide. We can however supply larger mirrors without a bevel. Please contact the office for quotation.

MADE TO MEASURE MIRRORS only

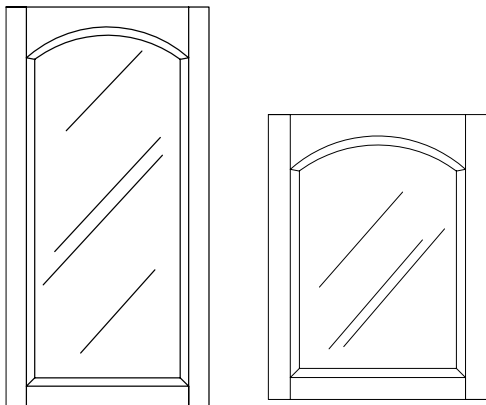
All mirrors are available in any of our styles. With or without reeds and a choice of bevelled or plain glass.



800 and 1200h rectangular mirrors with bevelled glass.

Group A are up to 800mm high
Group B are from 801mm to 1200mm high
Group C are from 1201mm to 1500mm high
Rectangular mirrors only.

	Group A	Group B	Group C
Up to 500mm.	£280	£391	£502
From 501 to 700mm.	£335	£446	£555
From 701 to 900mm.	£391	£500	£609
From 901 to 1100mm.	£447	£556	£665
From 1101 to 1300mm.	£500	£613	£744
From 1301 to 1500mm.	£556	£670	£780
From 1501 to 1700mm.	£613	£725	£834
From 1701 to 1900mm.	£670	£834	£888
From 1901 to 2100mm.	£725	£835	£945
From 2101 to 2300mm.	£780	£891	£999
From 2301 to 2500mm.	£734	£946	£1055



800 and 1200h arched top mirror With bevelled glass

Swept top mirrors only.

	Group A	Group B	Group C
Up to 500mm	£368	£489	£610
From 501mm to 700mm	£462	£582	£703
From 701 to 900mm.	£521	£643	£765
From 901 to 1100mm.	£616	£735	£856
From 1101 to 1300mm.	£676	£797	£918
From 1301 to 1500mm.	£735	£856	£977
From 1501 to 1700mm.	£856	£978	£1101
From 1701 to 1900mm.	£917	£1038	£1160
From 1901 to 2100mm.	£1041	£1163	£1284

Due to the beveling process we cannot manufacture wider swept top mirrors than 2100mm wide. We can however supply larger mirrors without a bevel.

Please contact the office for quotation.

Demister pads

Double insulated mirror pads especially designed for use in wet areas such as bathrooms. The 230v 4mm thick pad heats the mirror to 30°C in 4-8 minutes with a maximum surface temperature of 45 degreesC making it perfectly safe, even for a child to touch. The pads are wired into and switched from the lighting circuit. With the largest pad having an output of 196 watts they are inexpensive to run. The pads can be factory fitted or supplied loose for use on another project. They are available in 8 sizes and can be used singularly or in multiples.. When choosing the optimum size, deduct the width of your mirror frame (60mm X 2) from the overall dimension of the mirror to obtain the glass size. You can then select the size of pad. When factory fitted the usual mounting position would be central or over basin centre lines.

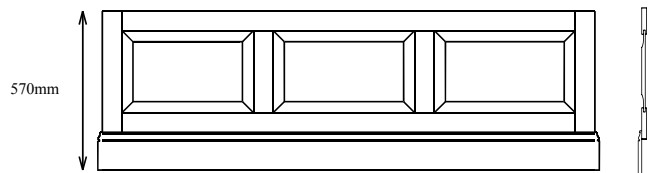
Pad size (mm)	Factory fitted	Supplied loose
360 x 500	£92	£62
410 x 580	£96	£67
570 x 750	£104	£73
580 x 680	£99	£65
580 x 850	£108	£79
280 x 1250	£80	£50
400 x 1380	£108	£80
550 x 1550	£113	£83

BATH PANELS

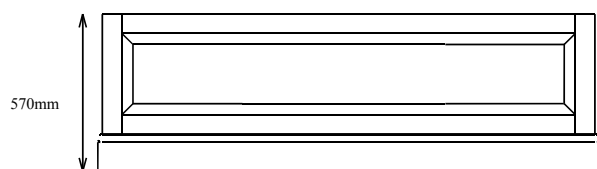
Available in all styles in solid wood.

Panels come complete with skirting

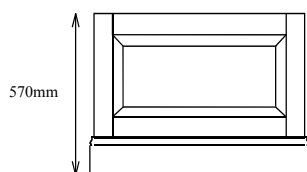
Units come as 570mm high and can be cut down to 495mm



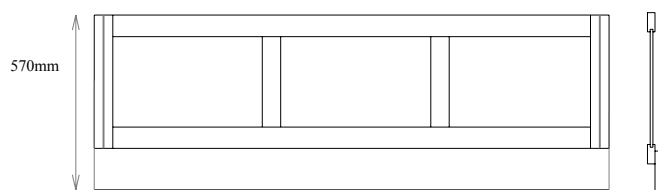
Standard 1700mm three section front panel and side elevation



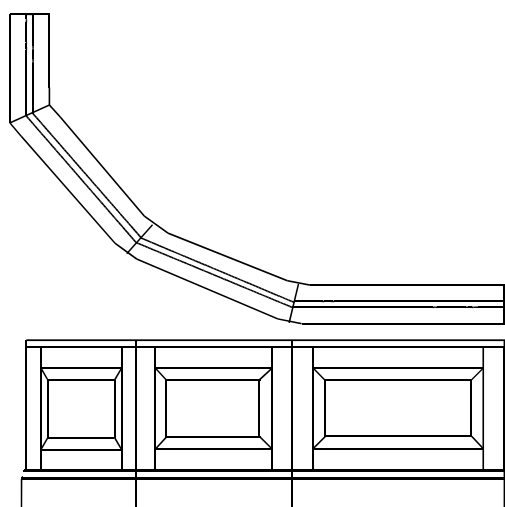
Special one section front panel



Standard end panel



Ocean three section bath panel front & side elevation



Corner bath panel. Made to your bath template in as many panels as necessary. Tops will follow the contour of the bath which can be curved.

Standard front panels

3 section	1700mm	£309
	1800mm	£327

Standard end panels

1 section	700mm	£176
	750mm	£176
	800mm	£193

Corner bath panel

£1045

Made to the exact specification and requirement to fit your corner or similar special shape bath.

Made to measure bath panels.

Either in Ocean, shaker or raised and fielded style. For panels over 600mm high price on request.

1 section

Up to 600mm	£259
From 601 to 800mm	£278
From 801 to 900mm	£307

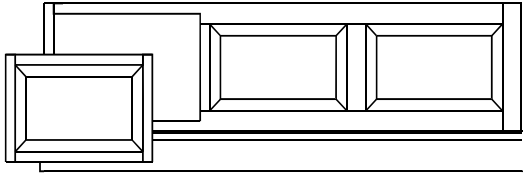
1 or 2 section

From 901 to 1100mm	£327
From 1101 to 1300mm	£347
From 1301 to 1400mm	£372

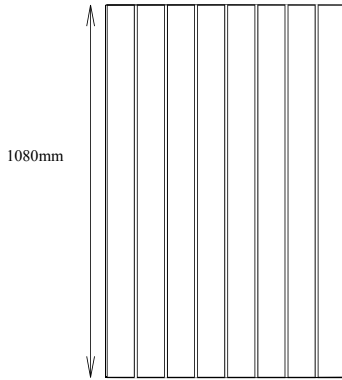
1, 2 or three section

From 1401 to 1600mm	£399
From 1601 to 1800mm	£437
From 1801 to 1900mm	£473

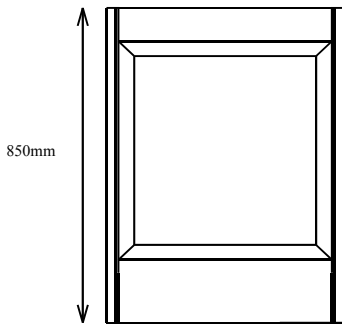
Bath panels continued



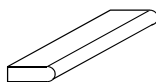
Typical access panel on touch



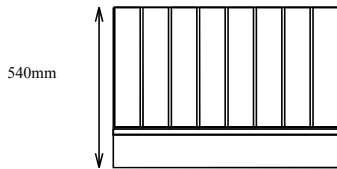
Primed wall panel.



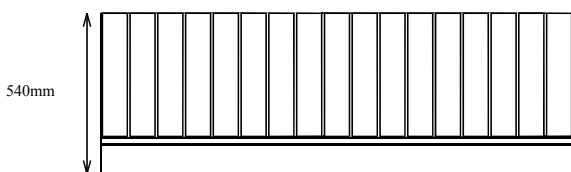
Typical wall panel.
Available in all timbers.



Bath panel and wall panel capping 21 x 60mm



Primed T&G and V end panel 800mm



Standard T&G and V front panel 1700mm long.

1, 2, 3, or 4 section.

From 1901 to 2100mm.	£511
From 2101 to 2300mm.	£550
From 2301 to 2400mm.	£568

1, 2, 3, 4 or 5 section.

From 2401 to 2600mm.	£643
From 2601 to 2800mm.	£723
From 2801 to 3000mm.	£812

Access panel plus additional. £267

This is built as a removable panel and usually fits in one of the bays of the panel. Can be hung on hinges as a door, with concealed hinge and touch latch or complete pop off panel. Please specify

Reeded stiles plus additional. £36

Bath panel infill. £55

This is to enable the panel to fit when it butts up to our furniture.

Top capping's for bath panels.

For use where a bath subframe restricts bath panels fitting.

Supplied loose for fitting to panel on site using conti blocks supplied.

For front panels up to 1800mm. £82

For end panels up to 800mm. £36

For lengths exceeding 1800mm add 10% for every 100mm.

Wall panelling.

Solid wood per metre. £544

Primed T G & V groove.

Wall panel 800mm long. £107

Does not include skirting or capping.

Capping 60mm wide per metre. £46

Primed T&G and V groove panels.

Including skirting.

Primed panels are ready for painting but are not water-proof until finally painted on site.

Front panel 1700mm. £113

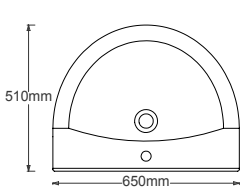
End panel 800mm. £66

Front panel 1900mm. £154

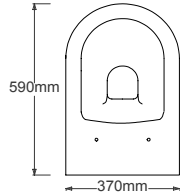
Front panel 2400mm. £192

SANITARYWARE.

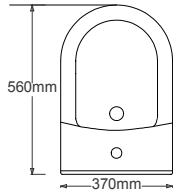
White only unless where specified.



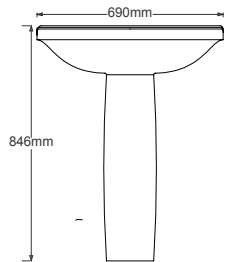
Laura semi countertop basin



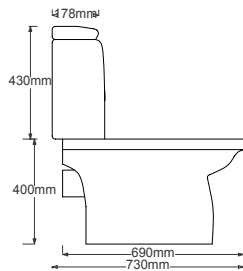
Laura full back to wall pan



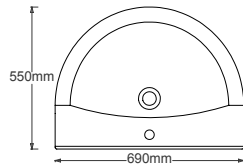
Laura full back to wall bidet



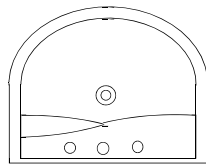
Laura pedestal and basin



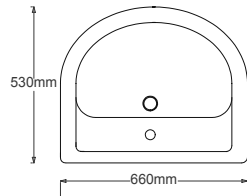
Laura close coupled pan and cistern



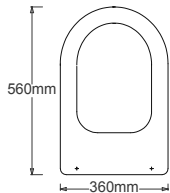
Plan of Laura pedestal basin



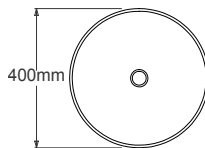
Chilgrove semi countertop basin



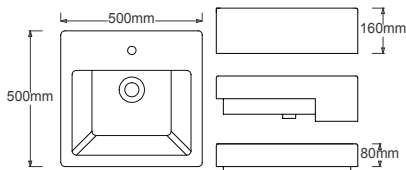
Lavington semi countertop basin



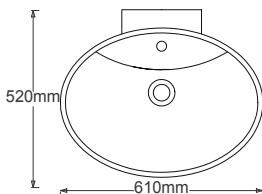
Lavington back to wall pan



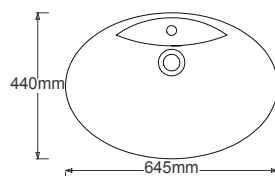
Sutton basin.



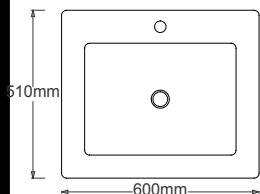
Plan of Walton, Merston & Colwoth basin
With side elevations.



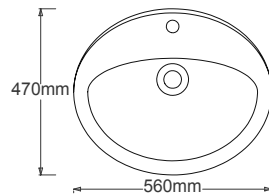
Chidhan basin



Emsworth basin

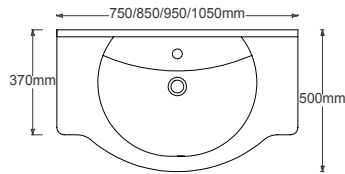


Tangmere basin

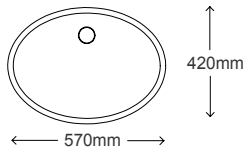


Charlton inset basin

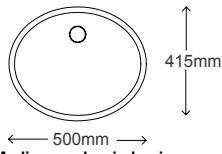
Laura semi countertop basin. *	£165
Laura full back to wall pan.	£199
Wooden toilet seat for above. (chrome hinge)	£165
Laura full back to wall bidet with (1 tap hole).	£196
Laura basin (for pedestal)	£102
Laura pedestal	£46
Laura close coupled pan	£156
Laura close coupled cistern including dual flush.	£134
Wooden toilet seat for above. (chrome hinge)	£165
Chilgrove semi countertop basin. *	£165
Lavington semi counter top basin.	£165
Lavington back to wall pan.	£174
Wooden toilet seat for above. (chrome hinge)	£165
Walton basin (square). *	£239
Merston semi countertop basin. *	£258
Colworth inset basin. *	£258
Sutton basin. No tap hole.	£258
Chidham basin. 1 tap hole only.	£258
Emsworth basin. 1 tap hole only.	£258
Tangmere basin (rectangular) *	£258
Charlton inset basin *	£115



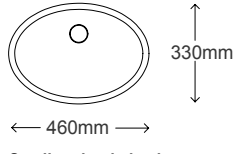
Donnington counter top basin



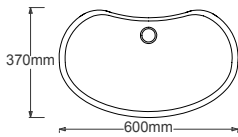
Large underpin basin



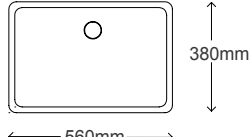
Medium underpin basin



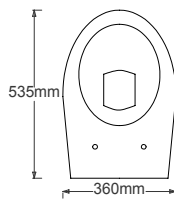
Small underpin basin



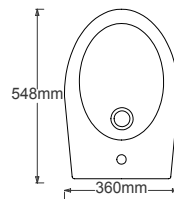
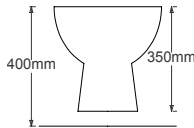
Jellybean underpin basin



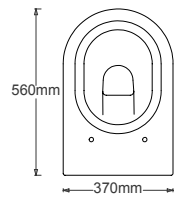
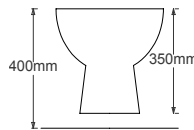
Square underpin



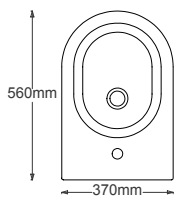
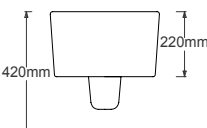
Supra wall hung w/c pan plan with front elevation showing distance from floor



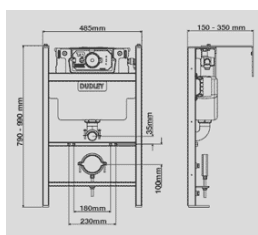
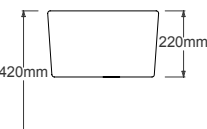
Supra wall hung bidet plan with front elevation showing distance from floor



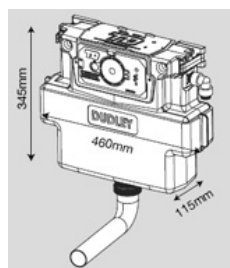
Piuma wall hung w/c pan with front elevation showing distance from floor



Piuma wall hung bidet plan with front elevation showing distance from floor



Wall hanging frame for w/c



Concealed cistern

- Donnington basin. 750mm long. * £149
- Donnington basin. 850mm long. * £188
- Donnington basin. 950mm long. * £227
- Donnington basin. 1050mm long. * £266
- Standard/large white Goodwood underpin Basin 570mm x 420mm (size of basin not aperture) Also available in pergamon. £116
- Medium white Goodwood underpin basin. 500mm x 415mm (size of basin not aperture) £116
- Small white Goodwood underpin basin. 460mm x 330mm (size of basin not aperture) £116
- Jelly bean underpin basin in white. 600mm x 370mm (size of basin not aperture) £149
- Square underpin basin in white 500mm x 350mm (size of basin not aperture) £149
The above supplied loose with no method of fixing (these are totally separate from marble price list and is only for sale as loose items).
- Supra wall hung w/c pan. £118
- Wooden toilet seat for above. (chrome hinge). £165
- Supra wall hung bidet. £118
- Piuma wall hung w/c pan. £273
- Wooden toilet seat for above. (chrome hinge) £165
- Piuma wall hung bidet. £268
- Concealed cistern with chrome dual flush button. £116
- Wall hanging frame and cistern for w/c with chrome dual flush button. £261
- Wall hung frame for bidet. £161

* basins marked thus are supplied with one tap hole. We can drill out for three tap hole at an additional charge. £36

TAPS AND MIXERS

A wide range of basin, bidet, bath and shower mixers and taps are available to compliment your choice of furniture. Our brassware range is unique in being able to offer matching shower valves in the same style as basin and bath mixers. Many different fitting systems are available for wall mounting, monoblock or three taphole ect. Due to the continuous expansion of range and full details of stock range and price lists are available at our web site www.goodwoodbathrooms.co.uk or call our sales office on 01243 532121.



ALVERO



LOGIC



HEY JOE



DESIGN



EGON



INVITO



BASE



KAI



OCEAN/HELIX



ARTIST



MIKE



LOVE ME



NINETY



KOMO



PRIMA



HIGH RISE



RETRO 27



TOTTI



THE ONE



TRADITIONAL



VOYAGER



WATER SQUARE



STREAM



ORION



ZEYA

The above is only a small selection of taps and mixers available, please visit WWW.GOODWOODBATHROOMS.CO.UK
For price list and full brassware details

SPECIAL SHAPE TOILET SEATS

We make over 300 different shapes of toilet seats to suit almost every model of toilet bowl available. Irrespective of whether your w/c pan was manufactured in the UK, Europe or further a field we are confident that we have a dedicated seat to fit.

Often it is impossible to identify the seat as the history of the toilet is unknown and/or the seat is missing or badly damaged. In this instance we offer an identification service where upon receipt of a card template we advise on the model of the w/c or best fit seat.

In response to this ever growing demand, caused by the huge amount of pottery manufacturers who design loos that can only be used with their own seat, we have introduced a specialised website.

WWW.ODDSHAPELOOSEAT.CO.UK

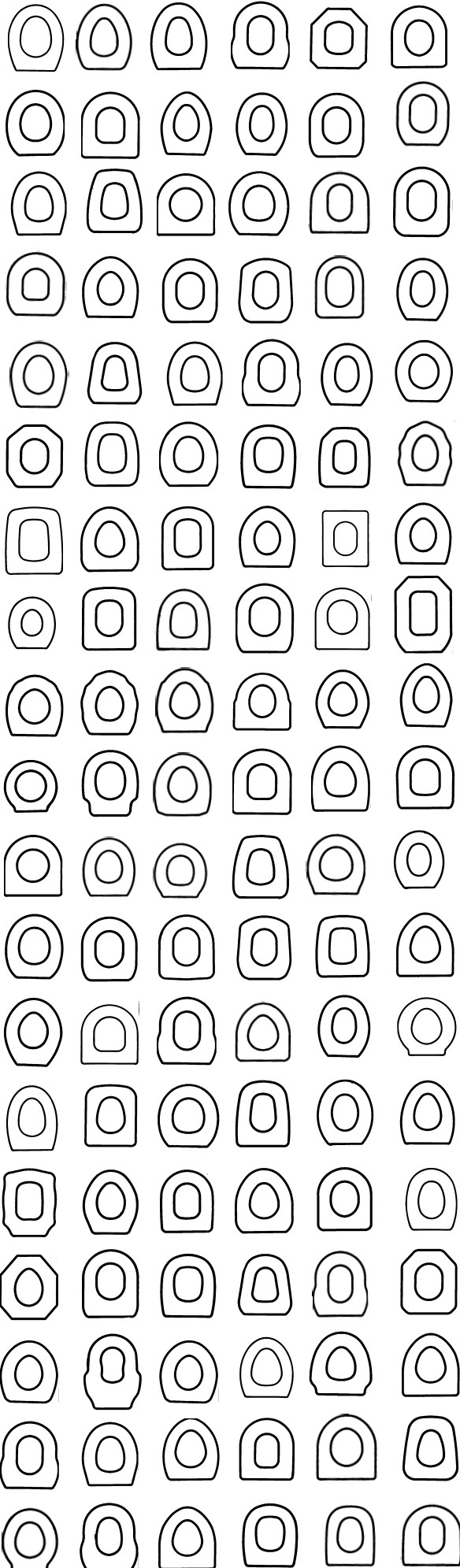
Where you can view all up to date models available by dimensions and pattern or use the search engine to select by make and model. The site also explains how to make a card template from your seat or pan using simple photographic steps.

New models and shapes are introduced weekly ensuring that the widest possible range is on offer.



WWW.ODDSHAPELOOSEAT.CO.UK





TOILET SEATS.

All seats are solid wood including white and coloured lacquer.

Goodwood standard toilet seat.

Adjustable hinge.

Chrome hinge. £165

Inca hinge. £179

Brushed or bright nickle hinge. £179

Goodwood standard toilet seats.

Concealed hinge.

These hinges are designed for pans that have restricted access and require fixing from the top. They are suitable for hole diameters between 13 and 20mm diameter. For larger holes specify Large diameter B.H.F. These are for holes between 18 and 25mm diameter. It is **the responsibility** of the **person ordering** to specify.

Chrome hinge. £185

Inca hinge. £199

Brushed or bright nickle hinge. £199

Special seats (all other shapes than standard) adjustable hinge.

Chrome hinge. £216

Inca hinge. £230

Brushed or bright nickle hinge. £230

Special seats concealed hinge.

Chrome hinge. £236

Inca hinge. £250

Brushed or bright nickle hinge. £250

Toilet seat handles.

	chrome	inca	nickle
Fitted.	£44	£49	£49
Supplied loose.	£31	£35	£35

Toilet seat hinges (loose).

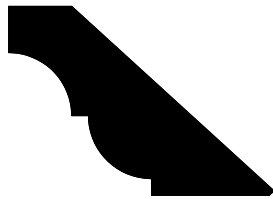
standard hinge.	£23	£37	£37
concealed hinge.	£42	£56	£56

It is possible to make small adjustments to the size of some seats for a surcharge starting at £90.

MOULDINGS & MISC



Skirting
16mm x 135mm



Standard cornice
45mm x 45mm



Contemporary cornice
22mm x 30mm



Light baffle
20mm x 25mm



Worktop edging
20mm x 20mm



B.O.G.
8mm x 15mm



Reeded
insert



Shaker
insert

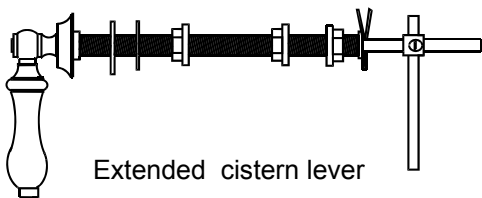


Ocean
insert

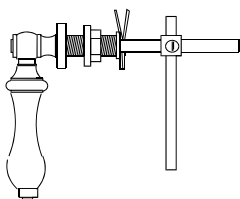


Arun
insert

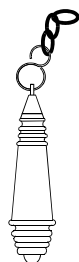
All inserts are 6mm x 45mm



Extended cistern lever



Standard cistern lever



Chain pull



Light pull

Skirting, cornice and moulding (per metre).

Lengths for mouldings are subject to availability.

Skirting.	£37
Cornice.	£46
Light baffle	£31
Contemporary cornice.	£31
D shaped worktop edging.	£39
Reeded moulding insert	£16
Shaker moulding insert	£16
Ocean moulding insert	£16
Arun rounded insert	£22
B.O.G. moulding.	£14

Levers & pulls.

	inca	chrome
Cistern lever all woods.	£49	£41
Ducted/extended lever all woods.	£82	£79
Chain pull for high level cistern in all woods.	£40	£29
Light pulls all woods.	£26	£24

Spares & miscellaneous.

Seat and lid buffers each (white or black)	£2
Stain per 500ml	£21
Knob in all finishes each	£6
Cupboard hinges in all finishes per pair	£6
Cupboard door lock fitted	£63
Marble sealer per 500 ml.	£15

Chrome inca nickle

Toilet seat hinge	£23	£37	£37
Toilet seat hinge blind hole fix	£42	£56	£56

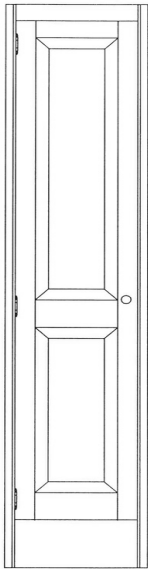
Colour matching service.

We are able to offer simple colourmatching to a sample supplied by yourselves.

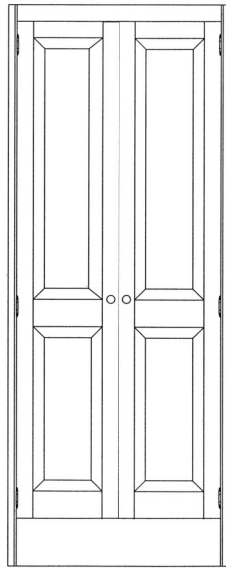
Colourmatch toilet seats/accessories per order.	£98
Colourmatch furniture/bath panels per order.	£128

BEDROOM FURNITURE.

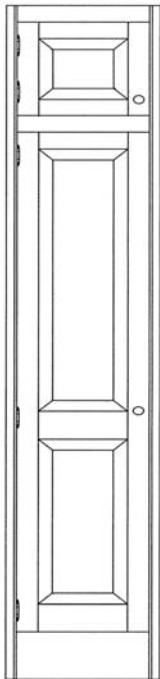
The following pages are a guide towards the individual prices within the Bedroom furniture range. Each order is made entirely to your own specification and many different components are required to make up a continuous run or arrangement of furniture. We recommend that you provide us with a simple sketch of your planned layout and we will supply you with a full quotation and CAD drawing



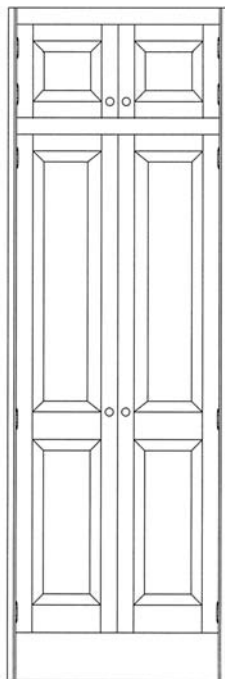
Single door wardrobe



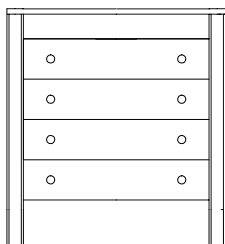
Two door wardrobe



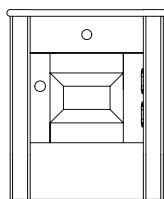
Two door wardrobe with top box



Four door wardrobe with top box



Four drawer internal drawer stack



Bed side cabinet

Wardrobe with full height door to 2250.

1 door up to 500mm.	£1255
2 door up to 1000mm.	£2387

Angled shelf unit up to 2500mm high.

Up to 500mm.	£1609
--------------	-------

Wardrobe with top boxes 2 doors up to 2500mm.

2 doors up to 500mm.	£2062
4 doors up to 1000mm.	£2780

Wardrobe internal fittings.

Extra hanging rail.	£59
6 adjustable shelves to 500mm	£257
6 adjustable shelves to 1000mm.	£281
4 drawer internal up to 500mm.	£750
4 drawer internal up to 1000mm.	£1343

All draws include soft close draw runners.

Solid finished carcass end in any style.

Up to 2500mm.	£472
From 2250mm and up.	£594

Bedside cabinet 550mm high.

Includes top and soft close draw runners.

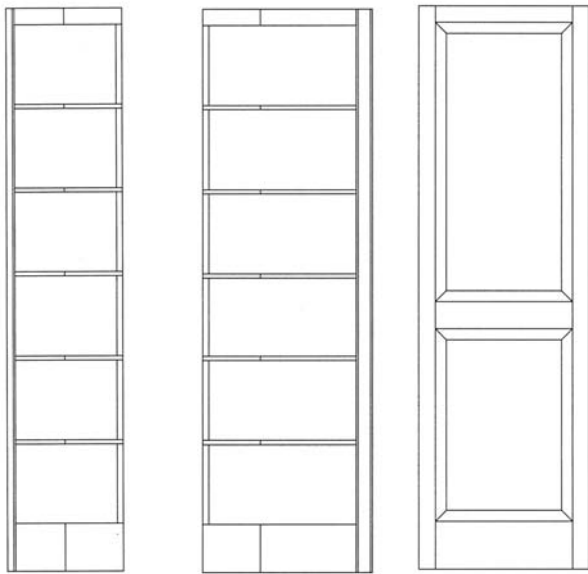
Up to 500mm wide.	£645
-------------------	------

Dressing table.

1 drawer up to 600mm.	£770
2 drawer 600 to 1000mm.	£887

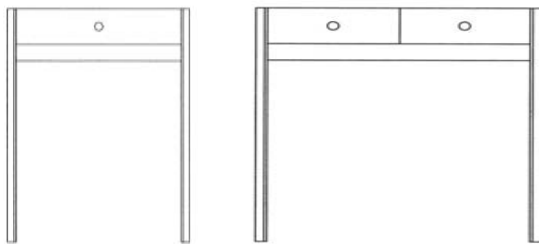
All draws include soft close draw runners.

BEDROOM FURNITURE CONTINUED

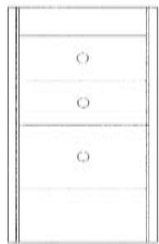


Front and side elevation of corner shelf unit

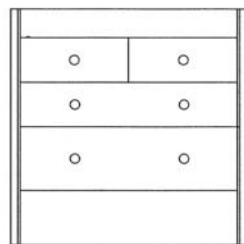
Panelled carcass end. Can be in any style.



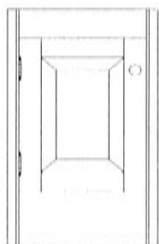
Single and double drawer dressing table



Drawer chest up to 600mm



Drawer chest from 600mm to 1000mm



Single door cupboard



Double door cupboard



Shelf unit with five adjustable shelves



Shelf unit with top box and six adjustable shelves

Chest of drawers.

Single drawer at top to 600mm. £693

Double drawer at top to 1000mm. £998

All draws include soft close draw runners.

Floor unit.

Single door to 600mm. £569

Double door to 1000mm. £595

Wardrobe shelf units.

Up to 2250 high.

Up to 500mm. £1020

Up to 1000mm. £1921

The above comes with 5 adjustable shelves.

With top box up to 2500.

Up to 500mm. £1607

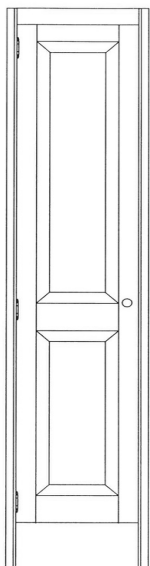
Up to 1000mm. £2304

The above comes with 6 adjustable shelves.

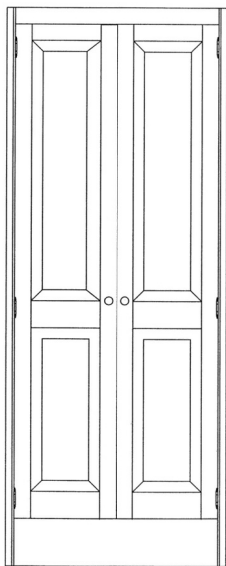
Pelmets, lights and mirrors see pages 24 to 26

For skirtings and cornice see page 34.

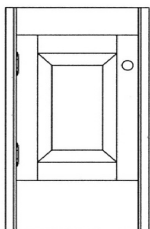
For worktops see pages 22 to 24.



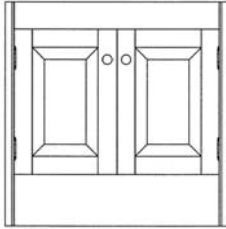
1 door with frame
Up to 2000mm high
Up to 600mm wide



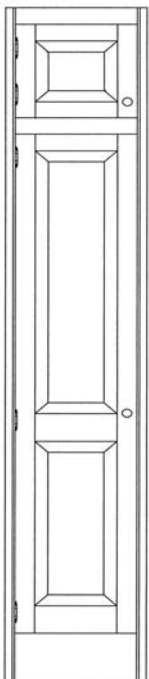
2 doors with frame
Up to 2000mm high
Up to 1000mm wide



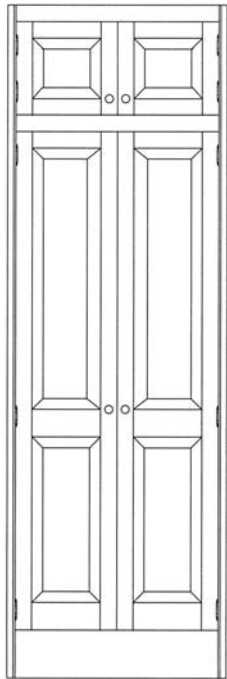
1 door with frame
Up to 1000mm high
Up to 600mm wide



2 door with frame
Up to 1000mm high
Up to 1000mm wide



2 doors with frame
Up to 2500mm high
Up to 600mm wide



4 doors with frame
Up to 2500mm high
Up to 1000mm wide

FRAMES AND DOORS.

Doors pre-hung in frames manufactured in any height and fit. A cost effective way of covering doorways and openings and forming airing cupboards. Available to match any Goodwood design.

1 door.
Up to 600mm wide x up to 1000mm high. £731
Up to 600mm wide x up to 2000mm high. £1012

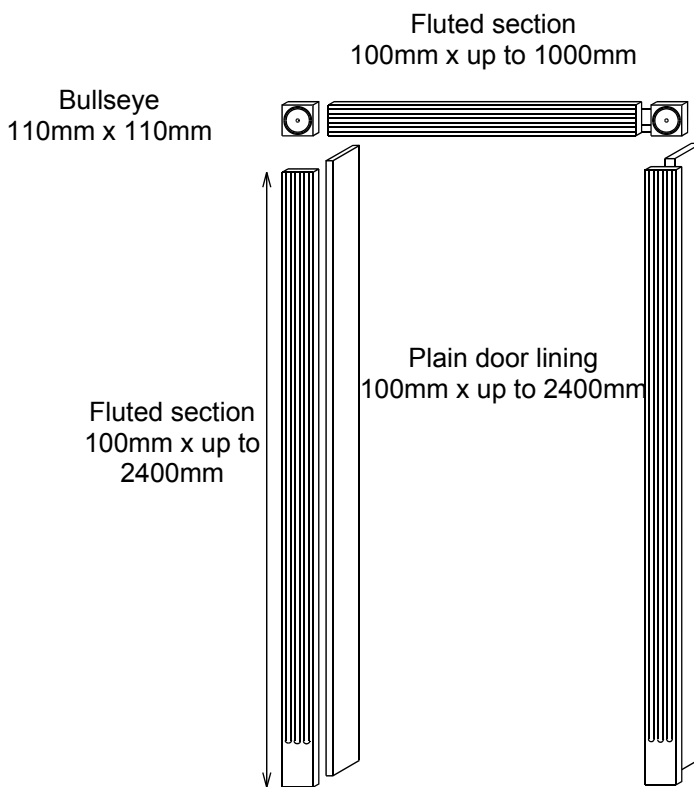
2 door.
Up to 1000mm wide x up to 1000mm high. £954
Up to 1000mm wide x up to 2000mm high. £1425
Up to 600mm wide x up to 2500mm high. £1425

4 door.
Up to 1000mm wide x up to 2500mm high. £1833

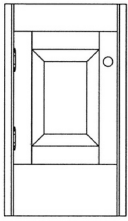
FLUTED SECTIONS/ ARCHITRAVES

Fluted sections.
Up to 100mm x up to 2400mm high. £152
Up to 100mm x up to 1000mm wide. £111
Corner bullseye to suit above. £81

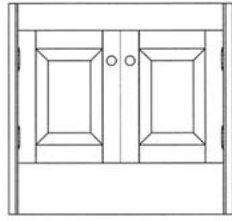
Plain door lining.
Up to 100mm x up to 2400mm high. £98
Up to 100mm x up to 1000mm wide. £80



Exploded view of a door and architrave set.



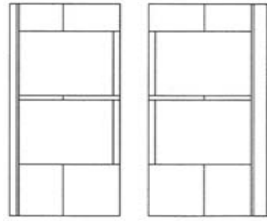
1 door library base unit



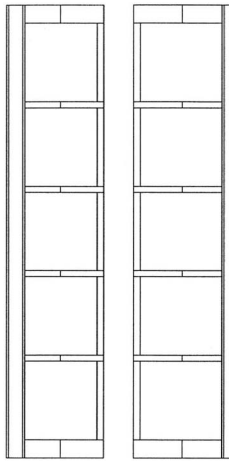
2 door library base unit



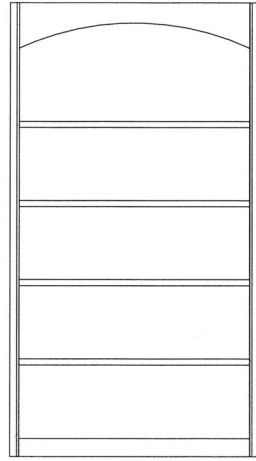
Open library base unit



Front & side elevation of corner library base unit



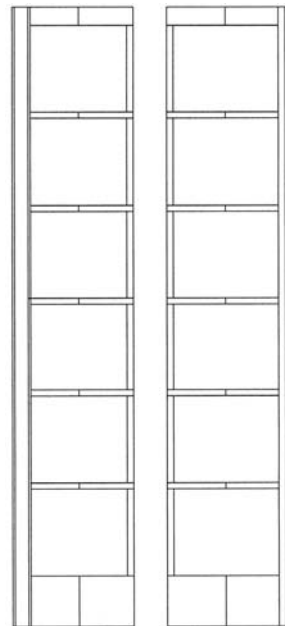
Front and side elevation of library corner upper shelf unit



Upper shelf unit



Full height shelf unit



Front & side elevation of Full height corner shelf unit

LIVING ROOM/LIBRARY UNITS.

Floor units 450mm deep x 700mm high.

The following pages are a guide towards the individual prices within the Living room and Library range. Each order is made entirely to your own specification and many different components are required to make up a continuous run or arrangement of furniture. We recommend that you provide us with a simple sketch of your planned layout and we will supply you with a full quotation and CAD drawing

Base cupboards.

1 door up to 640mm.	£892
2 door from 640mm to 1000mm	£1023

Base shelf units.

Shelf unit up to 600mm.	£551
Shelf unit from 600mm to 1000mm	£737
Corner shelf unit up to 400mm	£775

Upper shelf units 275mm deep x 1500mm high.

Includes 4 adjustable shelves.

Up to 600mm.	£791
From 601mm to 1000mm.	£1186
Corner shelf unit up to 400mm	£793

Full height shelf units 275mm deep x up to 2220mm.

Includes 6 adjustable shelves.

Up to 600mm wide.	£1344
From 601mm to 1000mm.	£1743
Corner shelf unit up to 400mm	£1271

Notes



GOODWOOD
BATHROOMS

Showroom and Factory

Church road, North Mundham, Chichester, West Sussex, PO20 1JU

Telephone (01243) 532121. Fax (01243) 533423

Internet: www.goodwoodbathrooms.co.uk, Email; sales@goodwoodbathrooms.co.uk